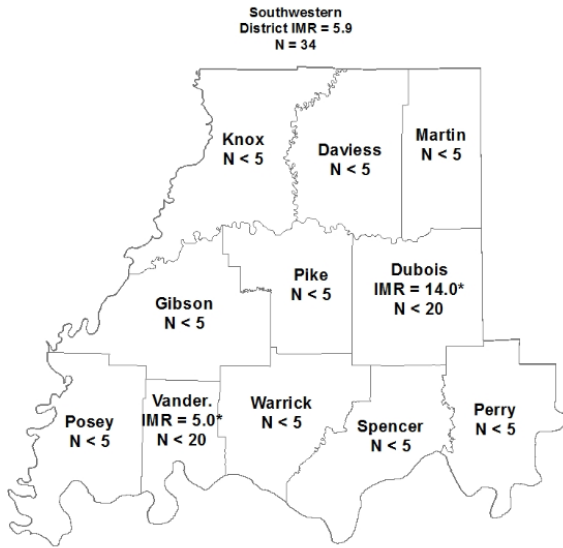


# INFANT MORTALITY

## Southwestern Hospital Region 2015

For more information on infant mortality in your area, please see the Indiana State Department of Health Mortality Report, Tables 2 and 8 (<http://www.in.gov/isdh/reports/mortality/2015/index.html>)

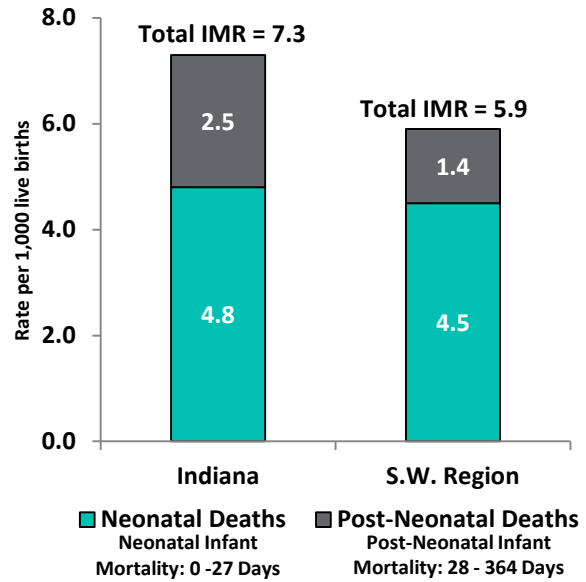


\* Numerator less than 20, the rate is unstable. We do not recommend comparing unstable rates.  
Note: Rates have been suppressed if numerator is less than 5, including zero.

### INFANT MORTALITY FACTS

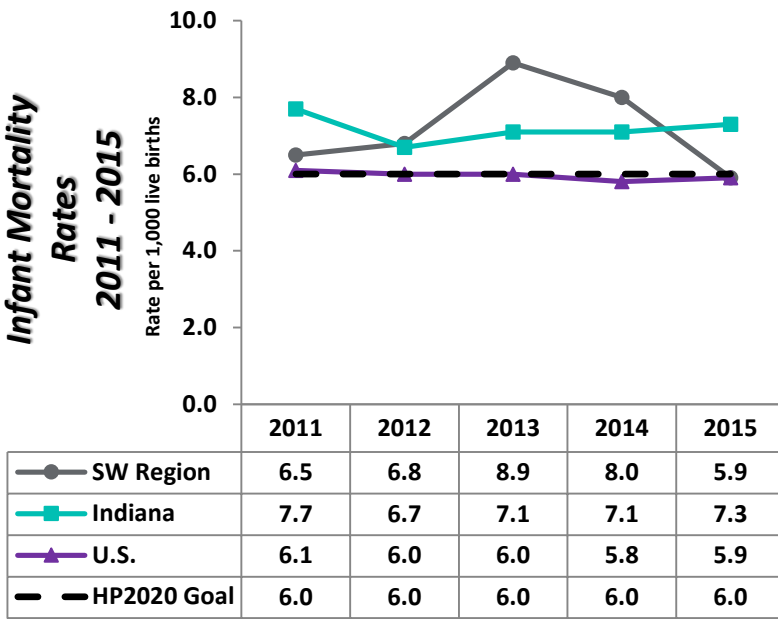
- Infant mortality is defined as the death of a baby before his or her first birthday
- The infant mortality rate (IMR) is the number of babies who die in the first year of life, per 1,000 live births
- Of the 613 Indiana infant deaths in 2015, 34 occurred in the Southwestern Hospital Region
- Black infants are 2.1 times more likely to die than white infants in Indiana

### Infant Mortality Rates by Age at Death



Note: Age specific mortality rates may not exactly equal the overall infant mortality rate due to rounding.

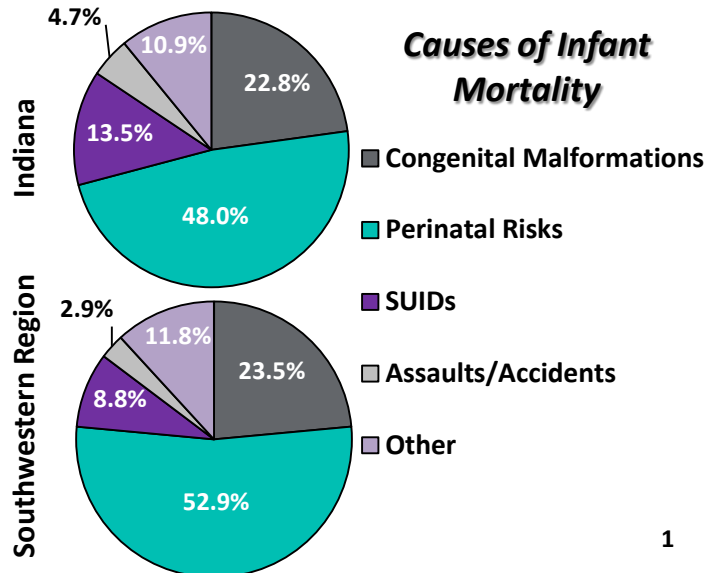
### Infant Mortality Rates 2011 - 2015



### PRACTICES TO REDUCE INFANT MORTALITY

- Improve overall health for women of child-bearing age
- Promote early & adequate prenatal care
- Decrease early elective deliveries before 39 weeks
- Decrease prenatal smoking & substance abuse
- Increase breastfeeding duration & exclusivity
- Support birth spacing & interconception wellness
- Promote the ABC's of safe sleep: place baby to sleep alone, on his or her back, in a crib

### Causes of Infant Mortality



# BIRTH OUTCOME INDICATORS

## Southwestern Hospital Region 2015

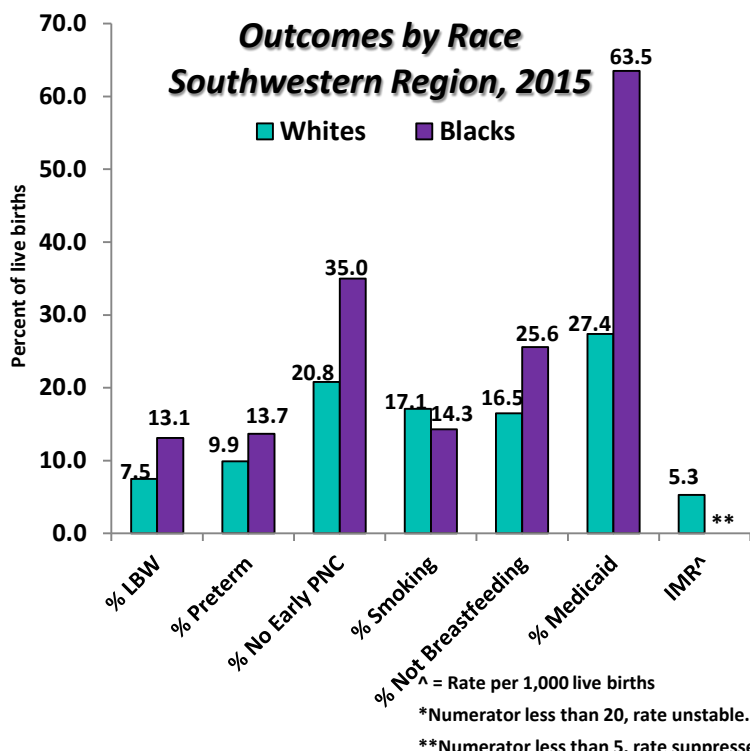
For more information on birth outcomes in your area, please see the Indiana State Department of Health Natality Report, Table 32 (<http://www.in.gov/isdh/reports/natality/2015/index.html>)

### INDIANA QUICK FACTS

- Smoking rates among pregnant women are always one of the nation's worst
- Almost 1/3 of pregnant women do not receive early PNC
- Black women in Indiana are more likely to have a LBW or preterm baby & not get early PNC
- White women in Indiana are more likely to smoke during pregnancy

### SOUTHWESTERN REGION QUICK FACTS

- There were 5,793 births in the Southwestern Region
- Higher percentage of preterm births when compared to Indiana
- Higher percentage of women receiving PNC in the first trimester
- Higher percentage of women smoking during pregnancy
- Higher percentage of women breastfeeding at discharge



LBW = Low Birthweight    PNC = Prenatal Care    IMR = Infant Mortality Rate

	% LBW (< 2,500 G)	% PRETERM (< 37 WKS GESTATION)	% NO EARLY PNC (1 <sup>ST</sup> TRIMESTER)	% SMOKING	% NOT BREASTFEEDING	% MOTHER ON MEDICAID
DAVISS	6.4	8.3	36.8	13.1	15.8	30.6 <sup>S</sup>
DUBOIS	7.7	11.9	15.6 <sup>S</sup>	11.2	19.4	13.3 <sup>S</sup>
GIBSON	7.0	11.6	18.6 <sup>S</sup>	17.3	13.4	26.3 <sup>S</sup>
KNOX	10.0	10.7	19.0 <sup>S</sup>	25.8 <sup>S</sup>	32.7 <sup>S</sup>	48.5
MARTIN	10.0*	12.3*	21.5	20.0	28.5	23.1 <sup>S</sup>
PERRY	8.1*	12.3	30.6	24.7 <sup>S</sup>	32.3 <sup>S</sup>	34.0
PIKE	5.1*	7.3*	13.9 <sup>S</sup>	23.4	19.0	20.4 <sup>S</sup>
POSEY	9.1	8.1	20.4 <sup>S</sup>	15.4	13.0	22.1 <sup>S</sup>
SPENCER	5.2*	6.3*	25.7	14.7	22.0	24.6 <sup>S</sup>
VANDERBURG	8.1	10.0	23.2 <sup>S</sup>	17.4 <sup>S</sup>	13.5 <sup>S</sup>	35.8 <sup>S</sup>
WARRICK	7.5	10.1	16.0 <sup>S</sup>	9.5 <sup>S</sup>	9.5 <sup>S</sup>	21.2 <sup>S</sup>
S.W. REGION	7.8	10.1	22.2	16.4	16.7	30.0
INDIANA	<b>8.0</b>	<b>9.6</b>	<b>30.7</b>	<b>14.3</b>	<b>19.5</b>	<b>43.0</b>

\* = Unstable rate due to fewer than 20 birth outcomes.

S = Significantly different from state.