

The left side of the slide features a decorative graphic consisting of several vertical elements: a thin dark green line, a wider light green bar with a fine grid pattern, another thin dark green line, and a thin light green line. To the right of these lines are five solid green circles of varying sizes, arranged in a cluster that overlaps the text area.

# **Indiana Trauma Care Committee Meeting**

August 9, 2013

# HOSPITALS REPORTING TO THE INDIANA TRAUMA REGISTRY – QUARTER 1

## **District 1**

Methodist Northlake

Methodist Southlake

## **District 2**

Community Hospital of  
Bremen

**Elkhart General**

Memorial Hospital South Bend

Pulaski Memorial Hospital

## **District 3**

Cameron Memorial

~~Dukes Memorial~~

Lutheran

Parkview Huntington

Parkview LaGrange

Parkview Noble

Parkview Regional Medical  
Center

Parkview Whitley



# HOSPITALS REPORTING TO THE INDIANA TRAUMA REGISTRY – QUARTER 1

## District 4

~~Franciscan St. Elizabeth –  
Lafayette Central~~

Franciscan St. Elizabeth –  
Lafayette East

IU Health – Arnett

IU Health – White Memorial

## District 5

St. Francis – Indianapolis

**St. Francis - Mooresville**

Hendricks Regional Health

IU Health – Methodist

IU Health – Riley for Children

Johnson Memorial

Major Hospital

St. Vincent - Indianapolis

Wishard Health Services

Witham Health Services

Witham at Anson



# HOSPITALS REPORTING TO THE INDIANA TRAUMA REGISTRY – QUARTER 1

## **District 6**

Community Hospital of  
Anderson & Madison Co.

IU Health – Ball Memorial

IU Health – Tipton

Marion General

Reid Hospital

St. Vincent Anderson

## **District 7**

~~Sullivan County Community~~

Terre Haute Regional

Union Hospital

~~Union - Clinton~~

## **District 8**

IU Health - Bedford

IU Health – Bloomington

~~Monroe Hospital~~

Schneck Medical Center

## **District 9**

## **District 10**

Deaconess

Good Samaritan

Memorial Hospital & Health  
Care Center

Perry County Memorial

St. Mary's Medical Center



## HOSPITALS TRAINED ON THE TRAUMA REGISTRY (YTD)

- Cameron Memorial
- Methodist Southlake
- Monroe Hospital
- St. Vincent Anderson
- IU Health – North
- Community Hospital of Anderson & Madison
- Scott Memorial
- Good Samaritan
- Daviess Community
- Bluffton Regional
- IU Health – Tipton
- Marion General
- St. Vincent – Clay
- Gibson General
- St. Mary's Warrick
- IU Health – Bedford
- St. Vincent – Jennings
- St. Margaret - Hammond



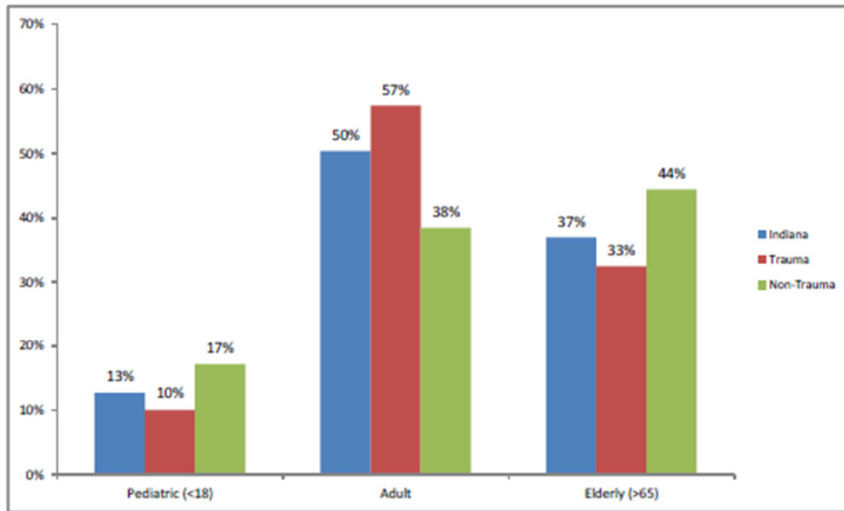
## QUARTER 1 2013 STATEWIDE REPORT

- 5,281 incidents
- January 1, 2013 to March 31, 2013
- 43 total hospitals reporting
  - 9 trauma centers
  - 34 hospitals

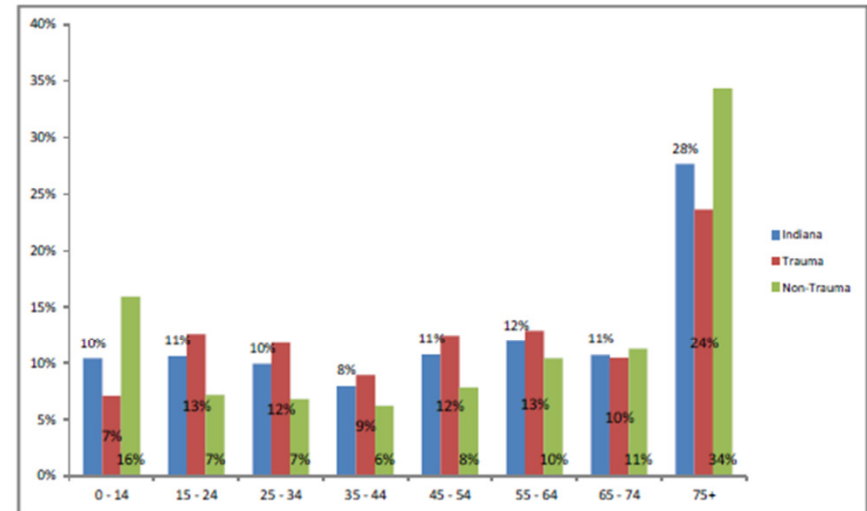


# PATIENT DEMOGRAPHICS

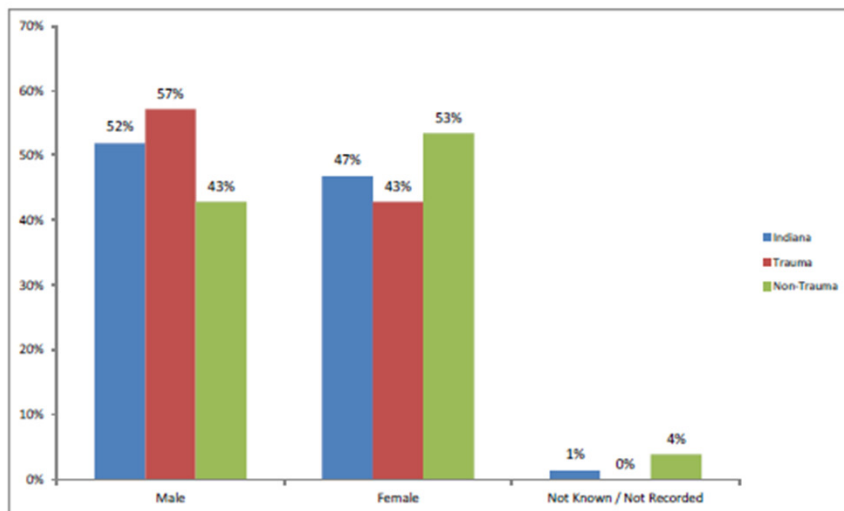
## Patient Age



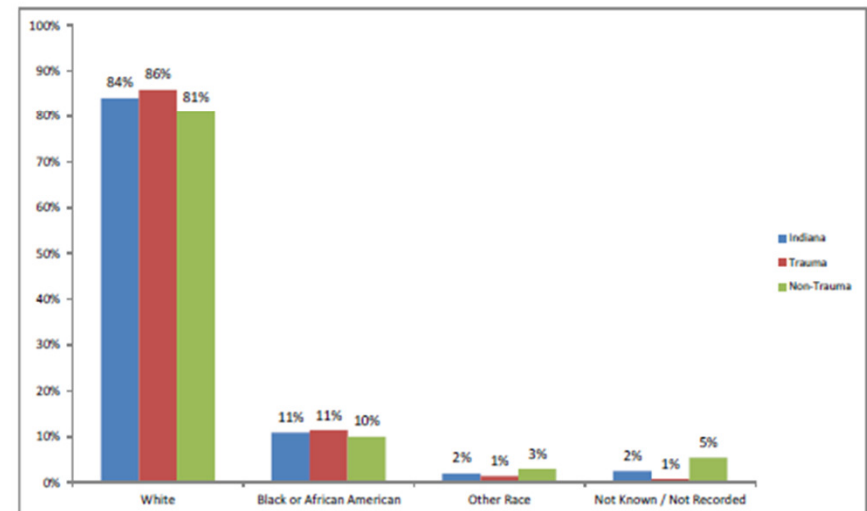
## Patient Age Groupings



## Patient Gender

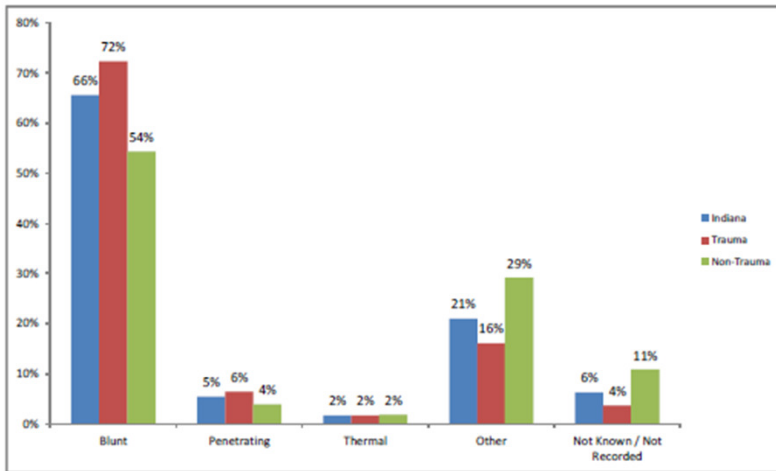


## Patient Race

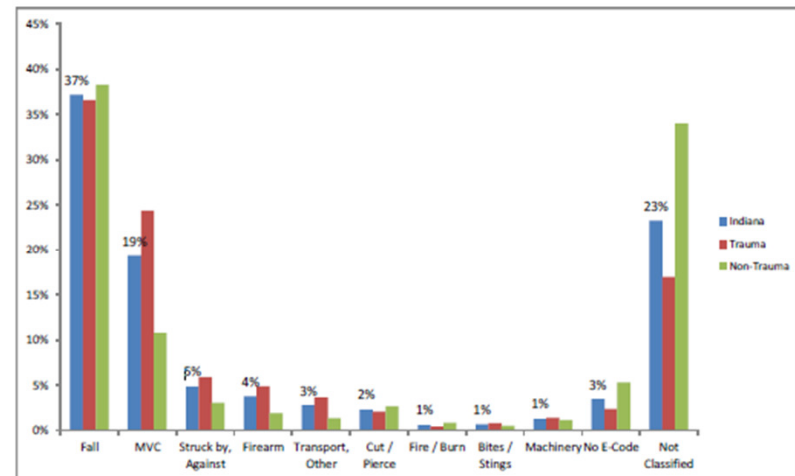


# INJURY

## Trauma Type

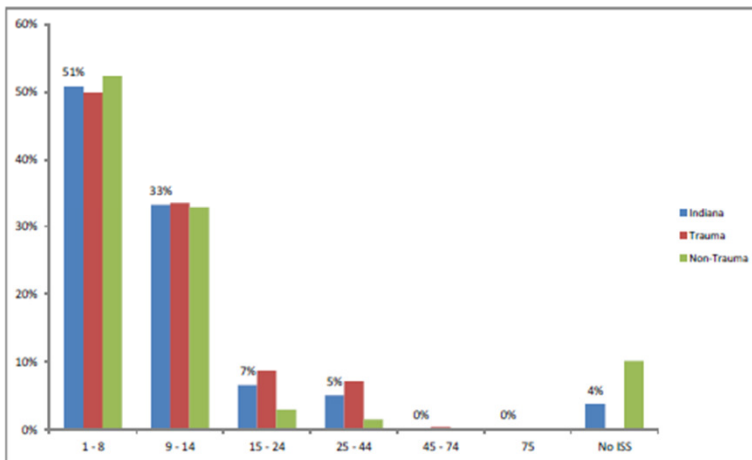


## Cause of Injury

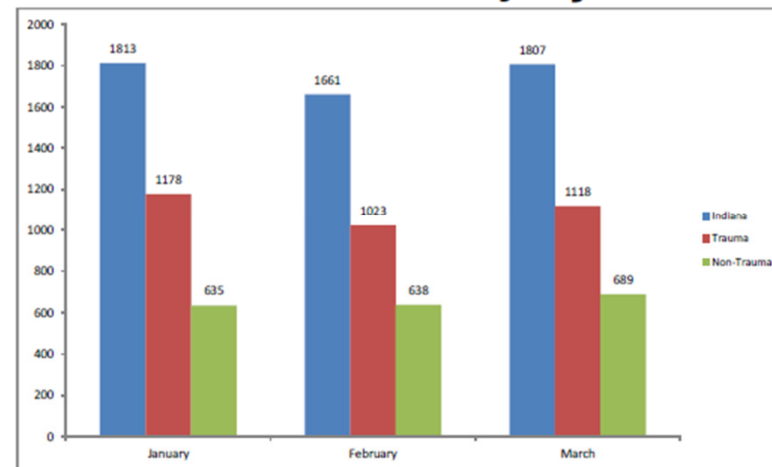


\* <1% COI: Pedestrian (Other), Natural/Environmental, Overexertion, Pedal Cyclist (Other)

## Injury Severity Score (ISS)



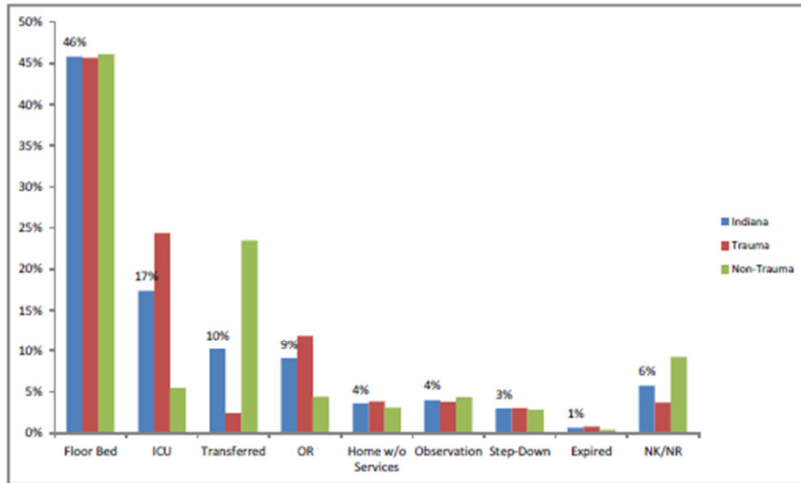
## Month of Injury





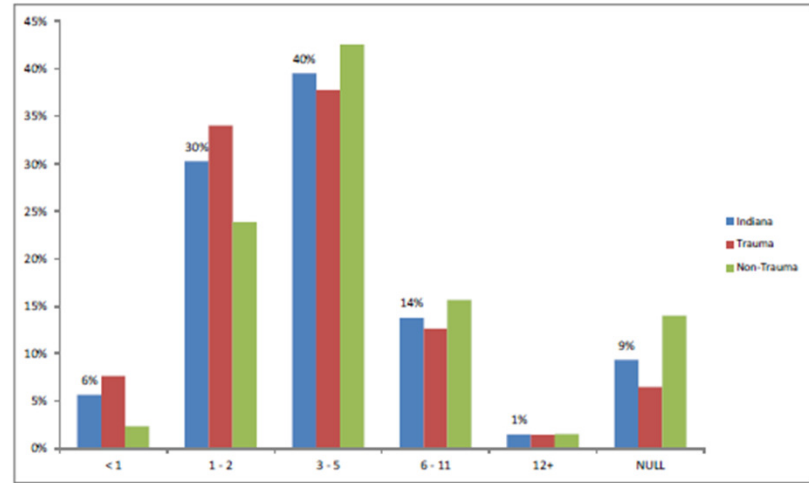
# DISPOSITION / LENGTH OF STAY

## ED Disposition

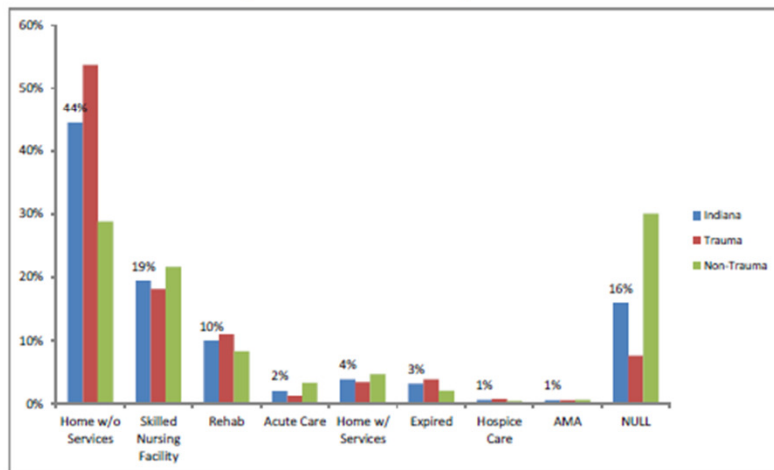


\*<0.5% ED Disposition: AMA, Home with Services, Other

## ED Length of Stay (Hours)

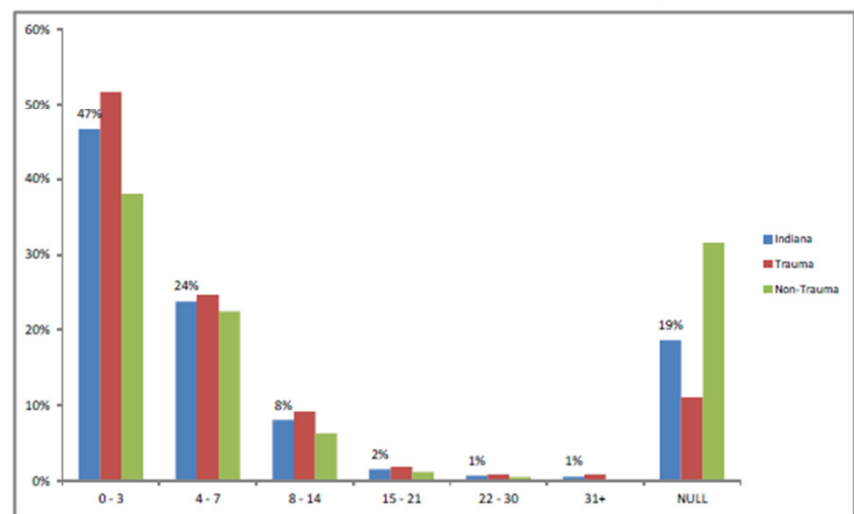


## Hospital Disposition



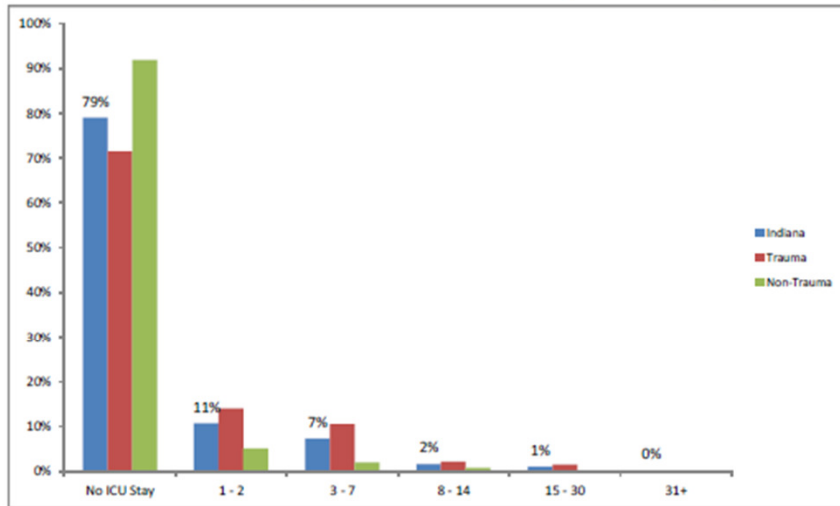
\*<0.5% Hospital Disposition: Intermediate Care Center

## Hospital Length of Stay (Days)

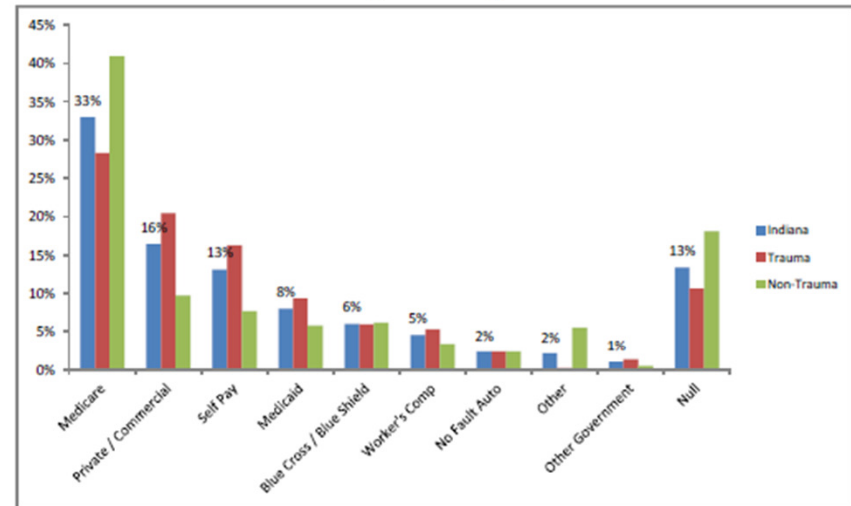


# PATIENT OUTCOMES

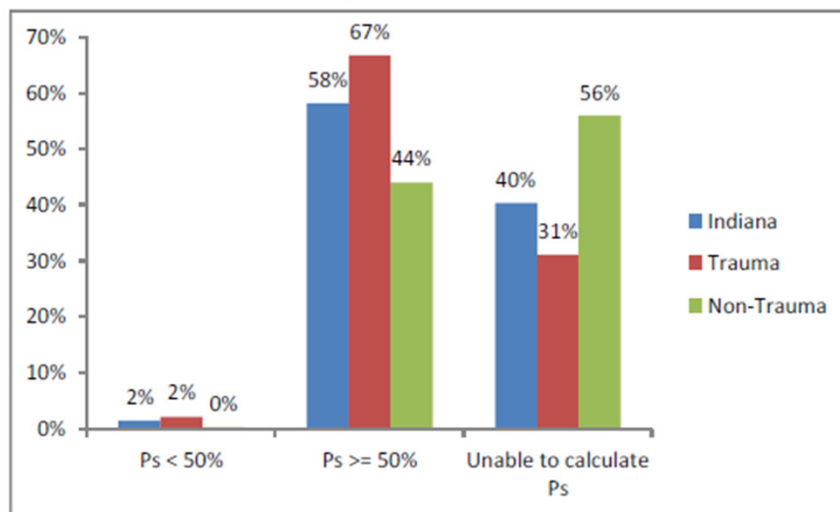
## ICU Length of Stay (Days)



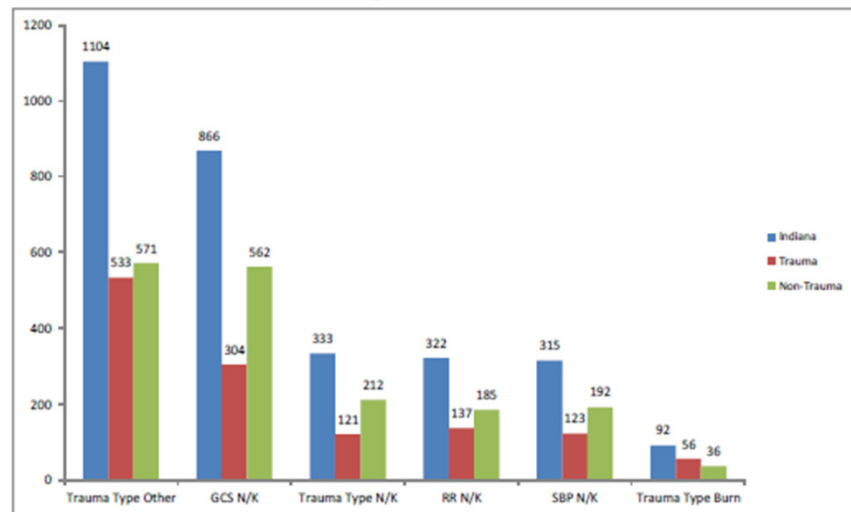
## Primary Payer Mix



## Probability of Survival ( $P_s$ )

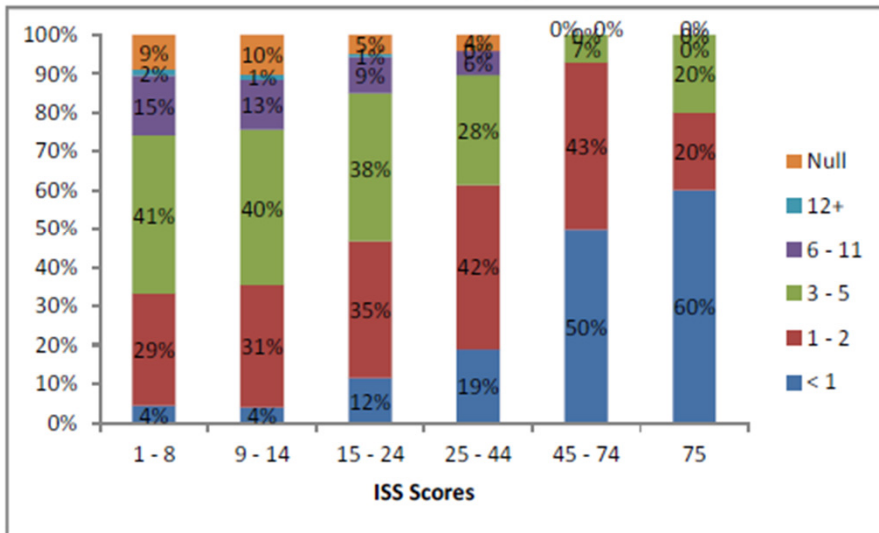


## $P_s$ Missing Components

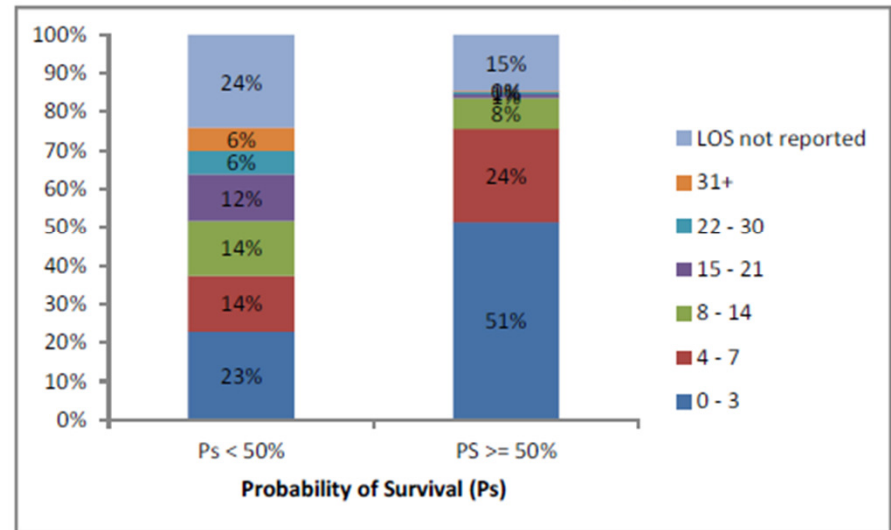


# LENGTHS OF STAY BY ISS AND PROBABILITY OF SURVIVAL

## ED LOS by ISS



## Hospital LOS by P<sub>s</sub>



## TRANSFER PATIENT DATA

### For Transfer Patients:

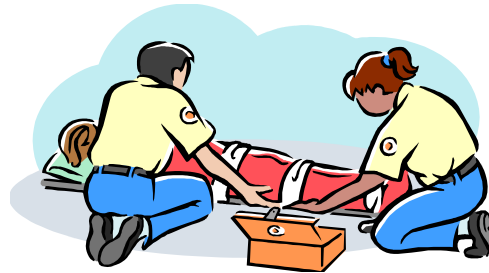
Probability of Survival	ED Length of Stay
$P_s < 50\%$ (n=5)	2.0 hours
$P_s \geq 50\%$ (n=204)	3.0 hours
Unable to calculate $P_s$ (n=144)	2.7 hours



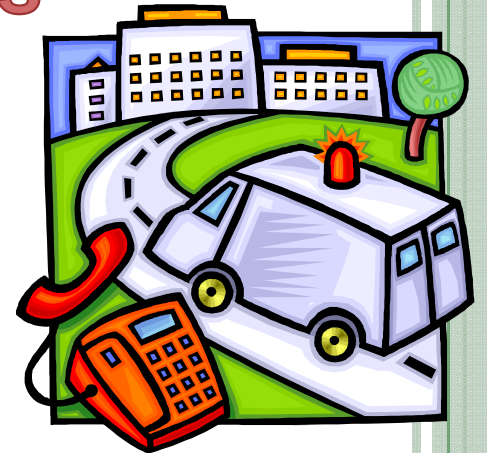
# TRANSFER PATIENT DATA - AVERAGES



**10  
minutes**



**17  
minutes**



# TRANSFER PATIENT DATA - AVERAGES



**17  
minutes**



**3 Hours  
13 minutes**



# TRANSFER PATIENT DATA - AVERAGES



**1 Hour**  
**1 minute**



**Total:**  
**5 hours**



QUESTIONS?

