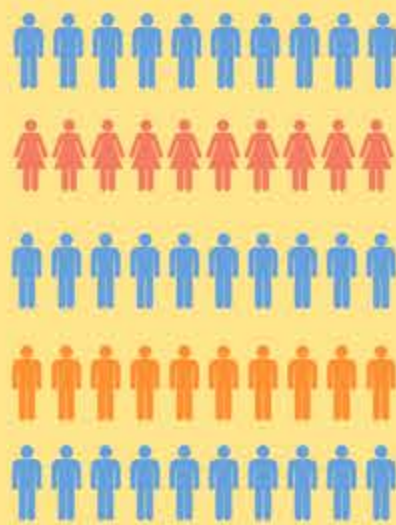


THE IMPACT OF ASTHMA IN INDIANA

APPROXIMATELY

546K

people have asthma in Indiana



HOSPITALIZATIONS

7,091

hospitalizations due to asthma in 2014



61.6%

61.6% of adults with asthma missed a week or less of work due to their asthma in the past 12 months

POOR WORK PERFORMANCE



ASTHMA ACTION PLANS SAVE LIVES

71%

of people with asthma were taught how to recognize early signs or symptoms by a health care professional



TAKE ACTION! CONTROL YOUR ASTHMA

For more information visit <http://www.in.gov/isdh/24965.htm>
or email us at ISDHasthma@isdh.IN.gov