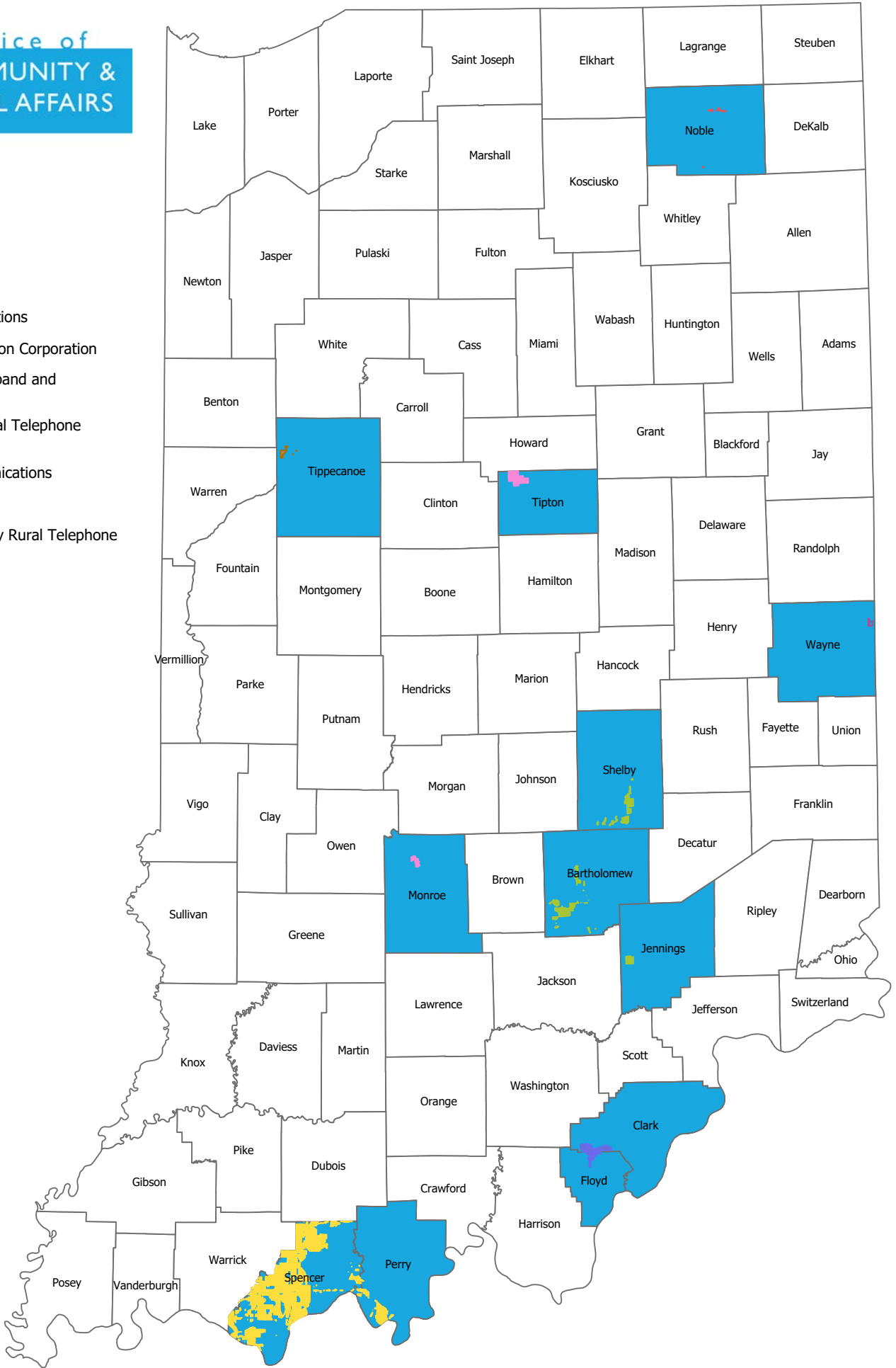


# Next Level Connections - Census Blocks Receiving Awards

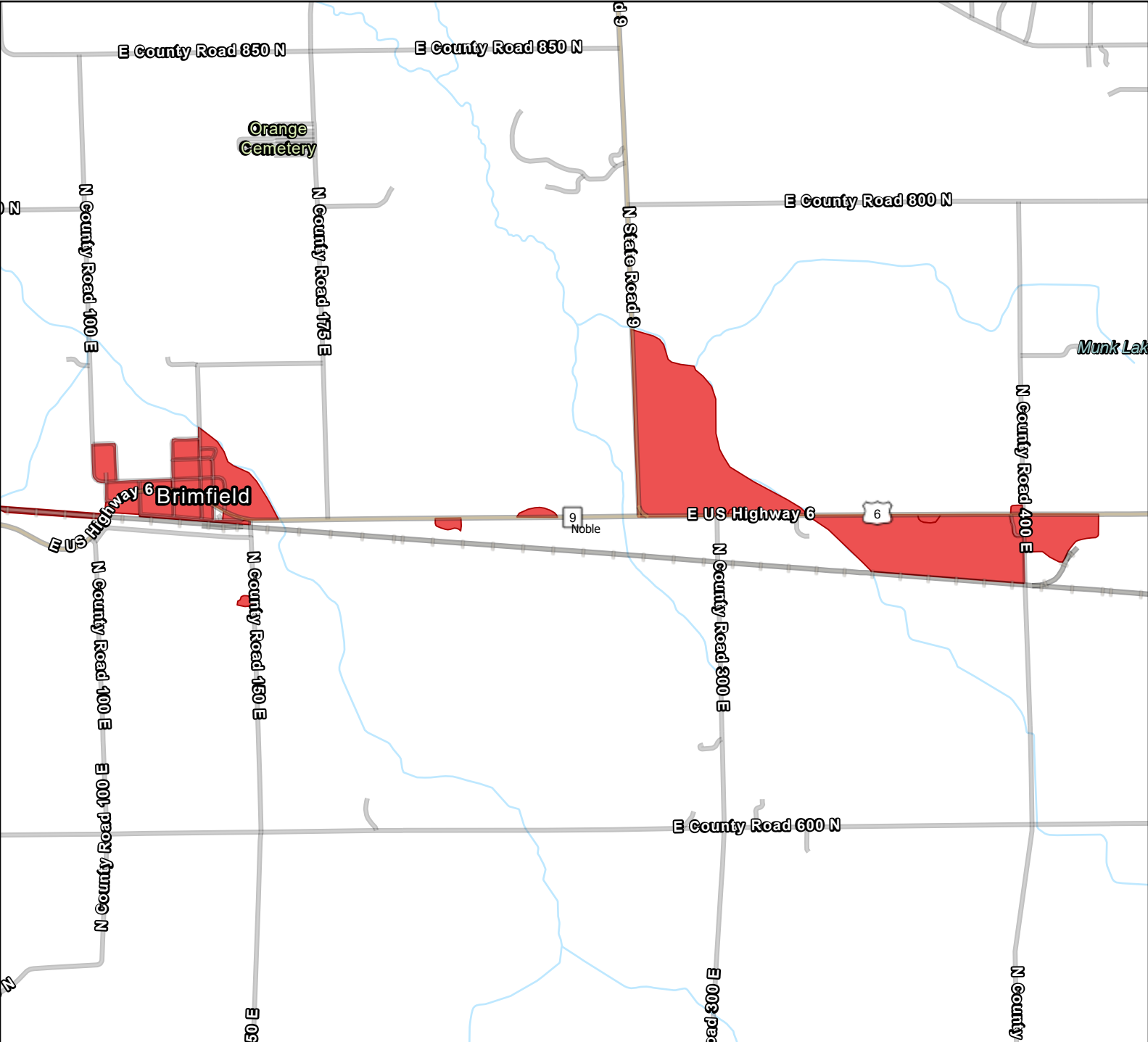


## Applicant

- LigTel Communications
- Miles Communication Corporation
- New Lisbon Broadband and Communications
- Perry-Spencer Rural Telephone Cooperative
- Smithville Communications
- Tipmont REMC
- Washington County Rural Telephone Cooperative
- Counties

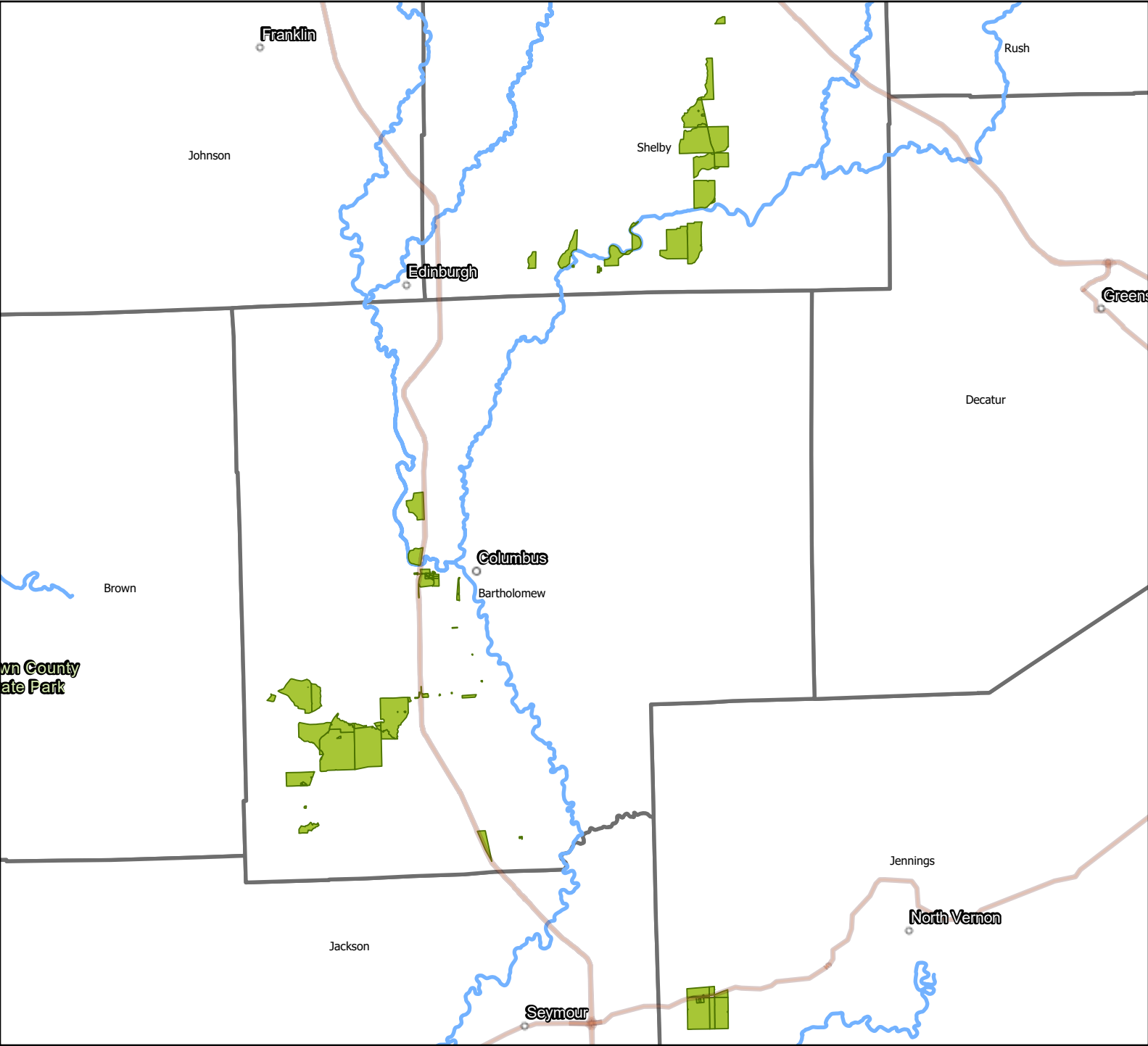
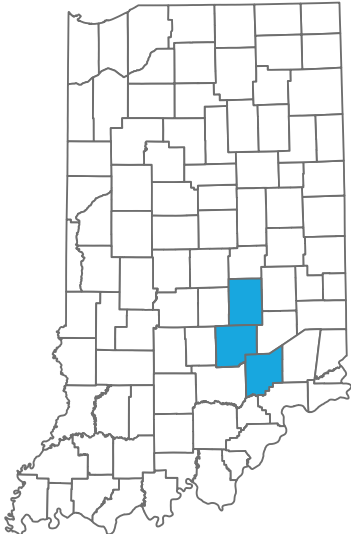


# Next Level Connections LigTel Communications



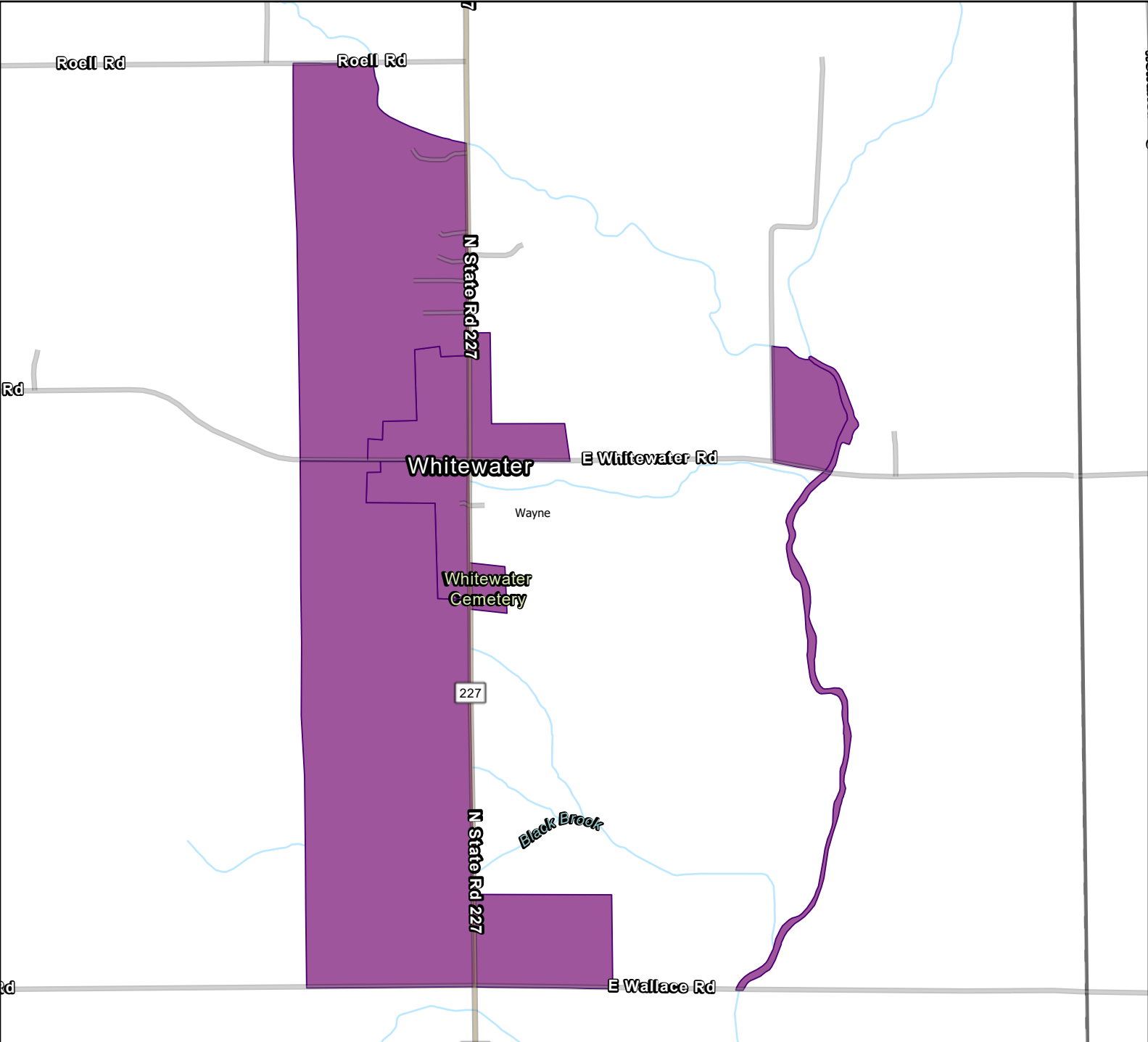
# Next Level Connections

Miles Communication Corporation



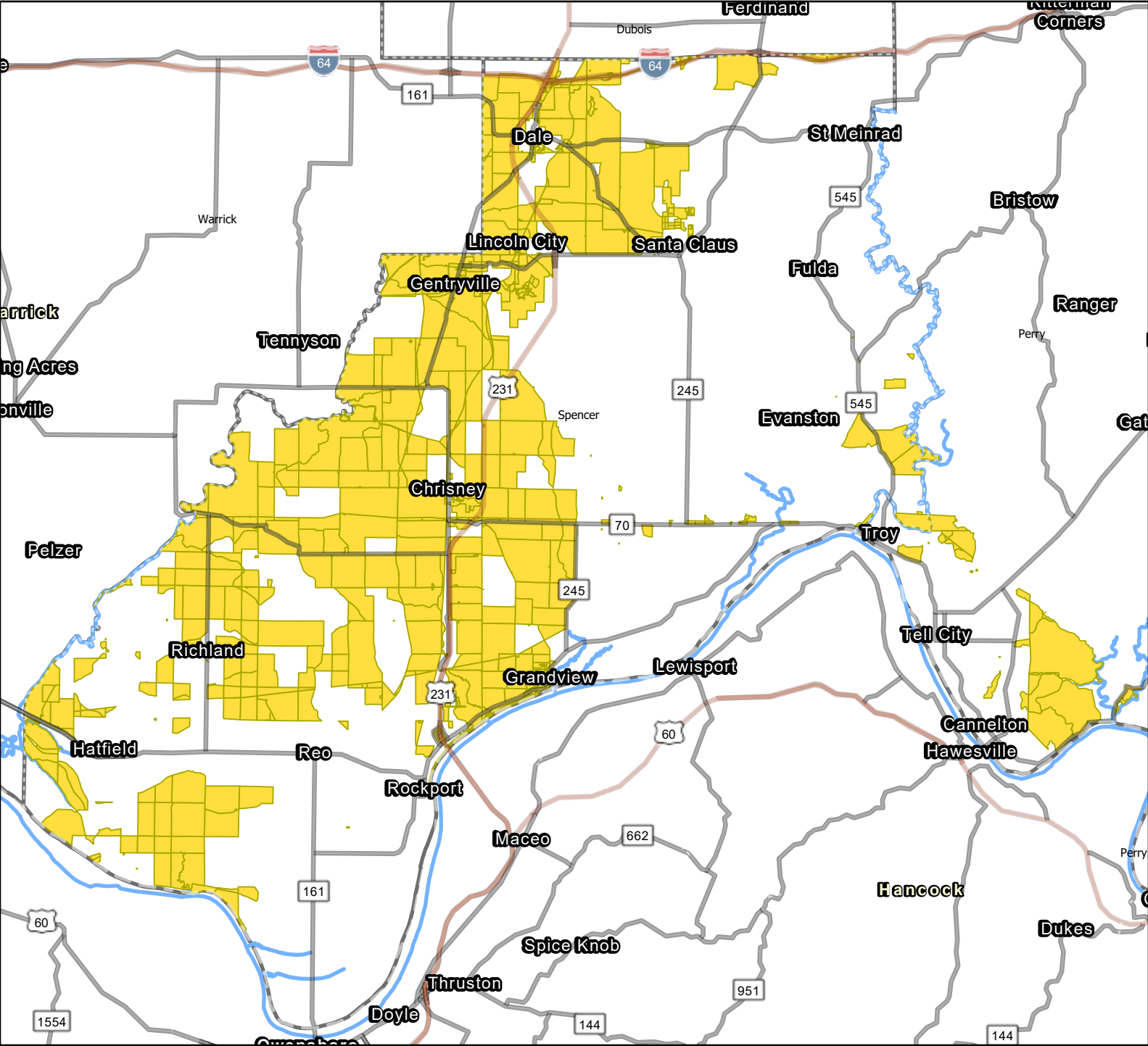
# Next Level Connections

## New Lisbon Broadband and Communications

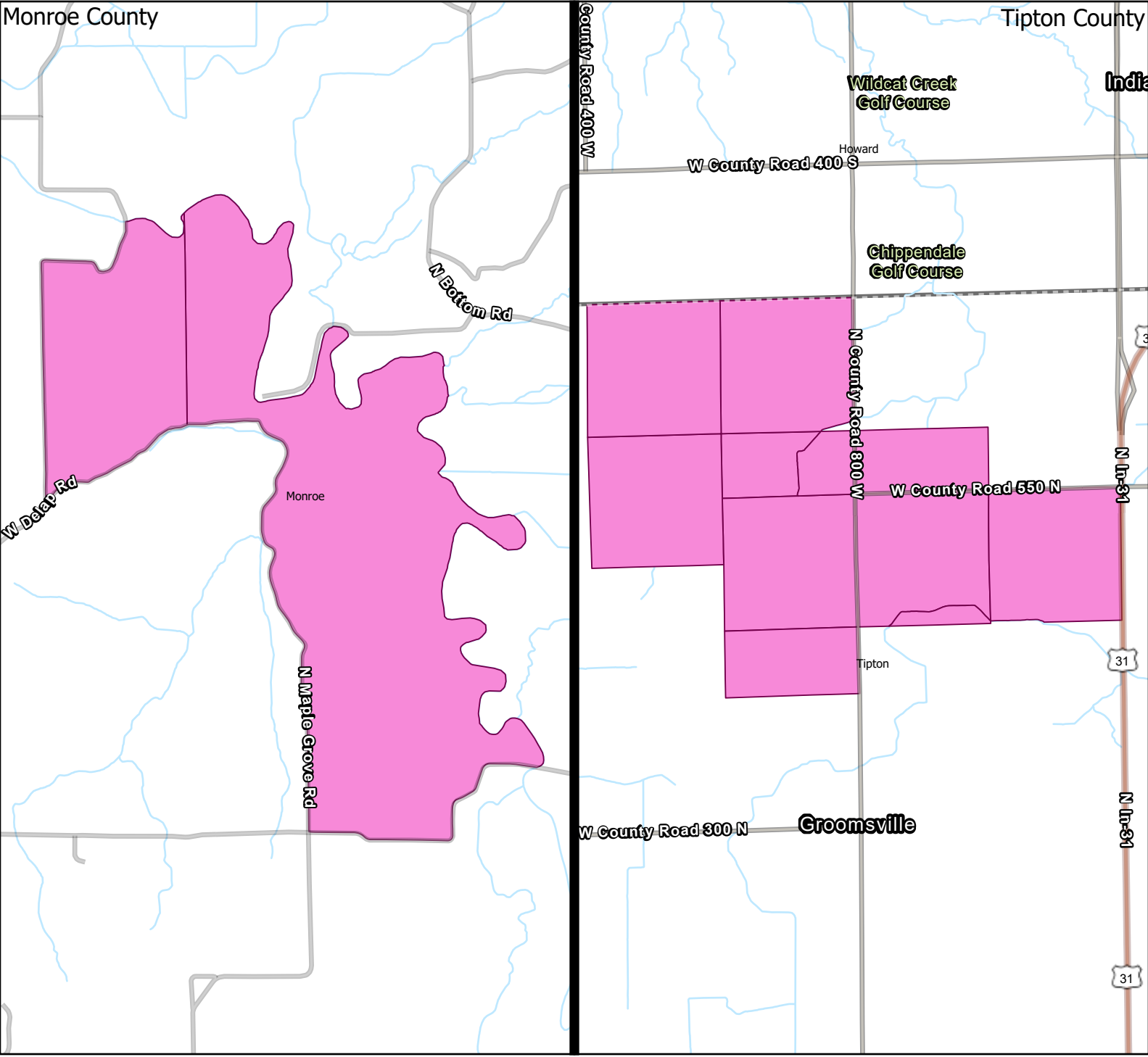
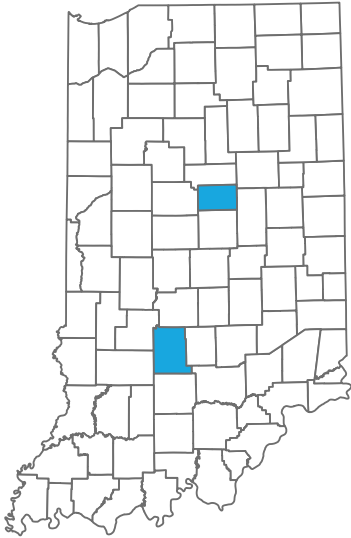


# Next Level Connections

## Perry-Spencer Rural Telephone Cooperative

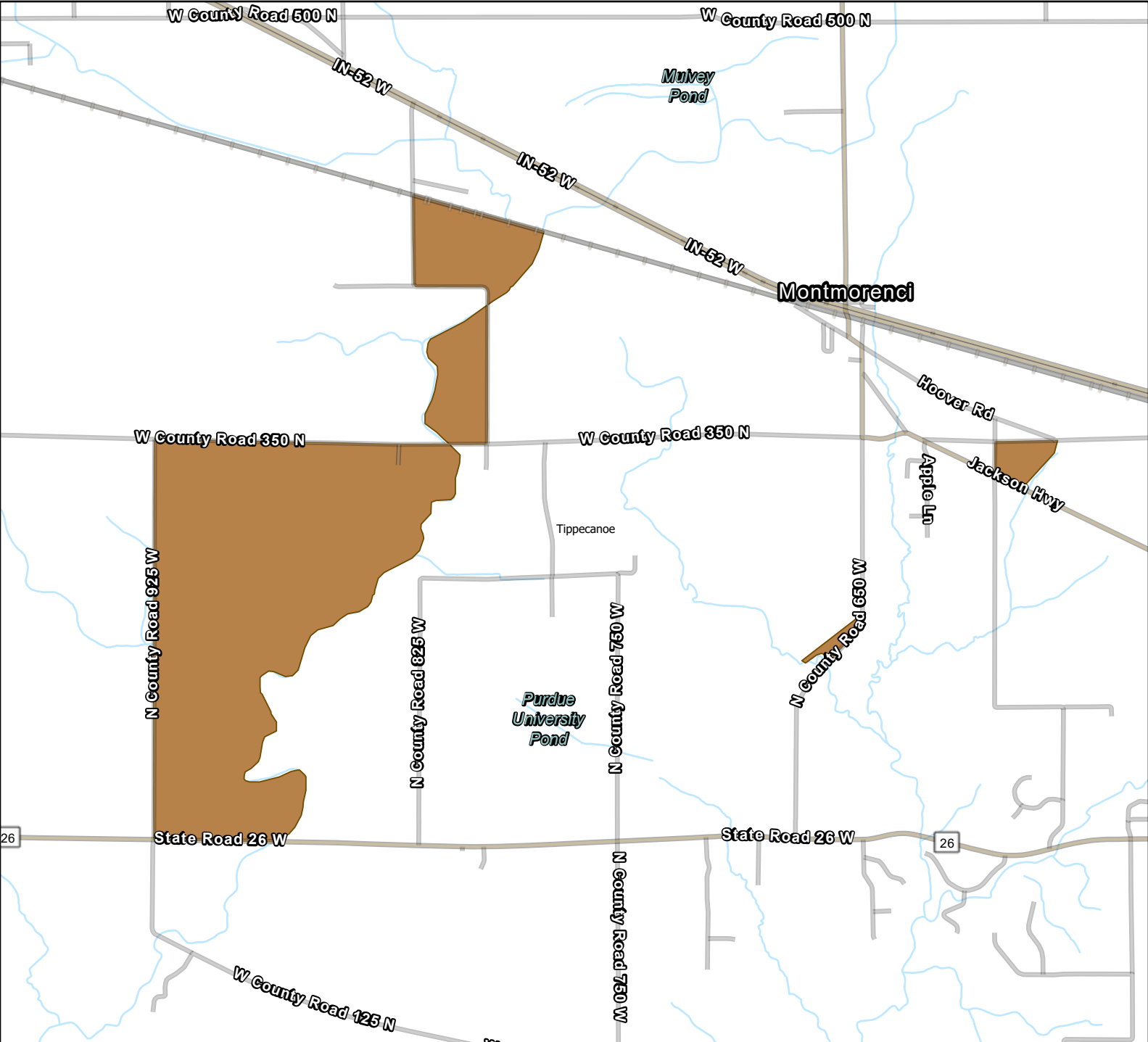


# Next Level Connections Smithville Communications



# Next Level Connections

## Tipmont REMC



# Next Level Connections

## Washington County Rural Telephone Cooperative

