

**School Corporation Expenditures by Expenditure Type**  
**Biannual Financial Report Data July 2013 - June 2014**  
**Crawford Co Com School Corp (1300)**

**Crawford Co Com School Corp (1300)**

	FY 2006	FY06 % of Total Exp	FY 2009	FY09 % of Total Exp	FY 2013	FY13 % of Total Exp	FY 2014	FY14 % of Total Exp
Student Academic Achievement	\$10,304,828	57.1%	\$10,518,910	58.0%	\$10,352,352	55.8%	\$9,093,219	52.4%
Student Instructional Support	\$1,122,903	6.2%	\$1,530,809	8.4%	\$1,807,468	9.7%	\$1,597,615	9.2%
Overhead and Operational Nonoperational	\$3,779,026	20.9%	\$4,273,166	23.5%	\$4,510,310	24.3%	\$4,846,109	27.9%
Nonoperational	\$2,852,954	15.8%	\$1,827,608	10.1%	\$1,894,536	10.2%	\$1,815,509	10.5%
<b>Grand Total</b>	<b>\$18,059,711</b>		<b>\$18,150,493</b>		<b>\$18,564,666</b>		<b>\$17,352,452</b>	

**Student Instructional Expenditures (Academic Achievement plus Support)**

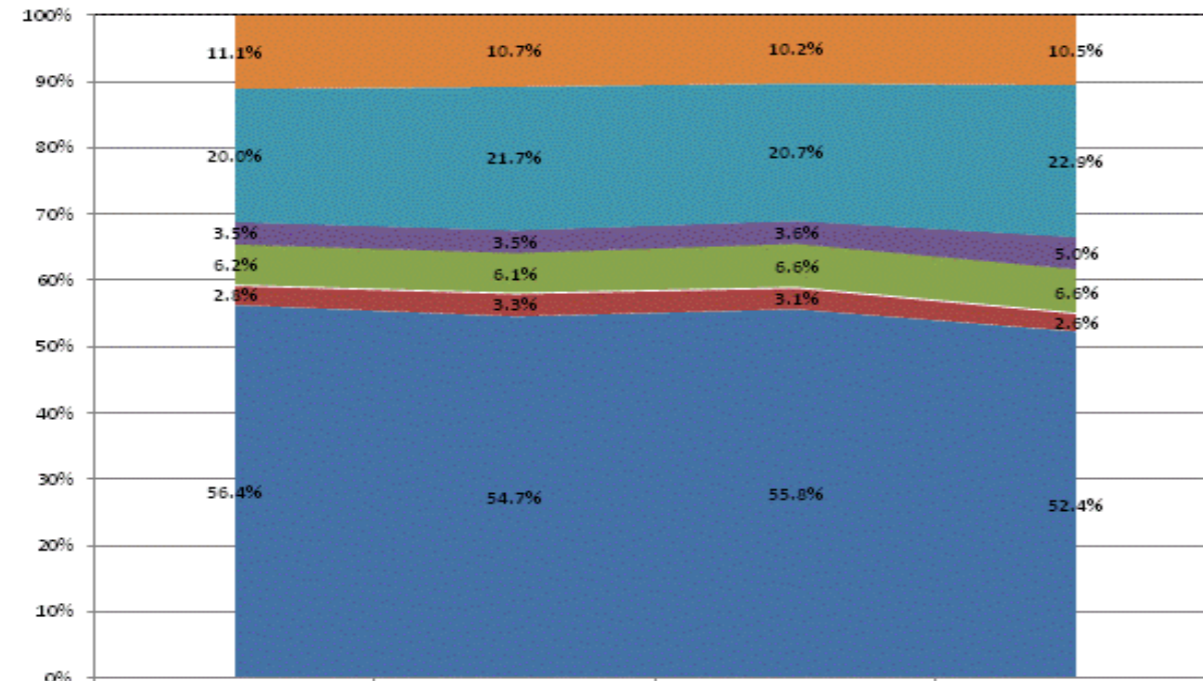
FY 2006  
63.3%

FY 2009  
66.4%

FY 2013  
65.5%

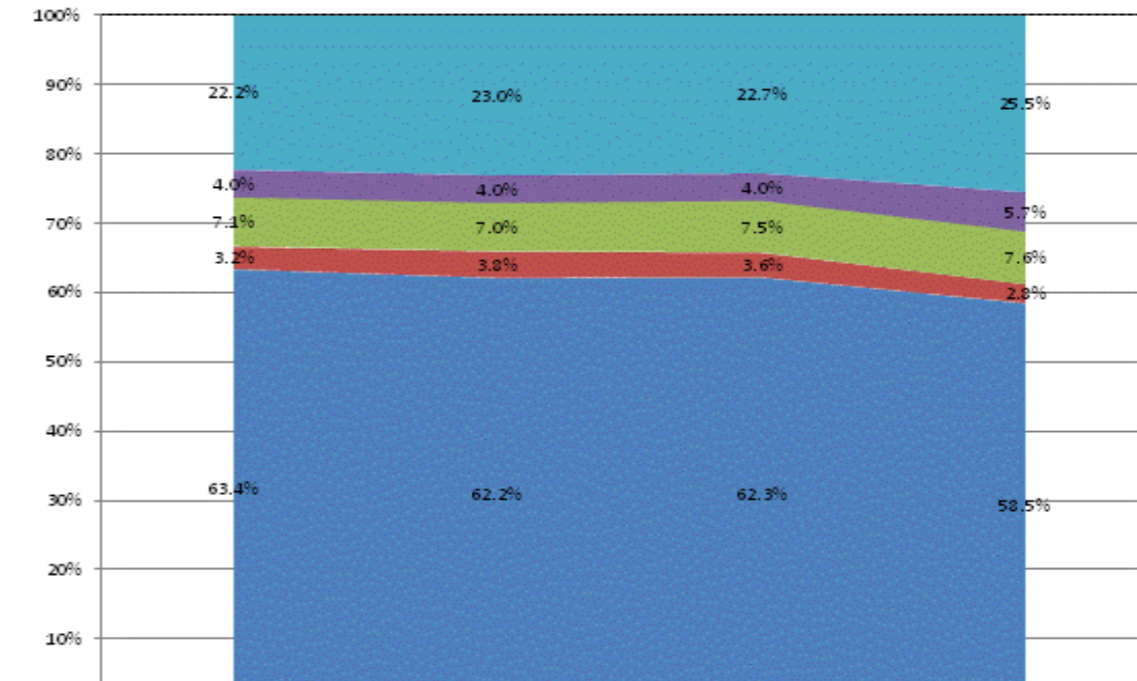
FY 2014  
61.6%

**All Expenditures**



	FY2011	FY2012	FY2013	FY2014
Non-Operational	11.1%	10.7%	10.2%	10.5%
Other Overhead and Operational	20.0%	21.7%	20.7%	22.9%
Corporation Administration	3.5%	3.5%	3.6%	5.0%
School Administration	6.2%	6.1%	6.6%	6.6%
Other Student Instructional Support	2.8%	3.3%	3.1%	2.6%
Student Academic Achievement	56.4%	54.7%	55.8%	52.4%

**Operational Expenditures Only**



	FY2011	FY2012	FY2013	FY2014
Other Overhead and Operational	22.2%	23.0%	22.7%	25.5%
Corporation Administration	4.0%	4.0%	4.0%	5.7%
School Administration	7.1%	7.0%	7.5%	7.6%
Other Student Instructional Support	3.2%	3.8%	3.6%	2.8%
Student Academic Achievement	63.4%	62.2%	62.3%	58.5%

**School Corporation Expenditures by Expenditure Type**  
**Biannual Financial Report Data July 2013 - June 2014**  
**Crawford Co Com School Corp (1300)**

<u>Account</u>	<u>FY 2006</u>	<u>FY 2009</u>	<u>FY 2013</u>	<u>FY 2014</u>	<u>Increase from FY 2006</u>	<u>Increase from FY 2009</u>	<u>Increase from previous year</u>
<b>Student Academic Achievement</b>							
11050 Regular Programs; Full Day Kindergarten	\$402,661	\$662,956	\$693,775	\$618,244	54%	-7%	-11%
11100 Regular Programs; Elementary	\$3,457,712	\$4,253,507	\$4,209,139	\$3,458,033	0%	-19%	-18%
11200 Regular Programs; Middle/Junior High	\$2,090	\$655	\$0	\$0	-100%	-100%	N/A
11300 Regular Programs; High School	\$1,695,947	\$2,909,008	\$2,896,863	\$2,449,904	44%	-16%	-15%
11350 Regular Programs; High School; Academic Honors Diploma	\$0	\$99,094	\$93,533	\$89,132	N/A	-10%	-5%
11420 Vocational Education; Agriculture B	\$61,674	\$81,828	\$84,550	\$76,905	25%	-6%	-9%
11450 Vocational Education; Consumer and Homemaking	\$33,925	\$72,752	\$91,703	\$78,963	133%	9%	-14%
11470 Vocational Education; Business Education	\$148,119	\$119,144	\$90,852	\$77,714	-48%	-35%	-14%
11480 Vocational Education; Industrial Education A	\$54,658	\$128,527	\$142,595	\$103,193	89%	-20%	-28%
11490 Vocational Education; Industrial Education B	\$36,471	\$0	\$0	\$0	-100%	N/A	N/A
11630 Regular Programs; Alternative Education Programs; High School	\$114,581	\$122,141	\$122,141	\$122,854	7%	1%	1%
12110 Gifted And Talented; Gifted and Talented	\$0	\$232,780	\$90,303	\$81,494	N/A	-65%	-10%
12210 Mental Disabilities; Mild Mental Disabilities	\$54,731	\$84,852	\$89,700	\$10,264	-81%	-88%	-89%
12220 Mental Disabilities; Moderate Mental Disabilities	\$232	\$524	\$1,649	\$2,148	> 500%	310%	30%
12230 Mental Disabilities; Severe Mental Disabilities	\$0	\$0	\$0	\$0	N/A	N/A	N/A
12350 Physical Impairment; Homebound	\$2,684	\$7,652	\$8,264	\$6,342	136%	-17%	-23%
12510 Culturally Different; Communication Disorders	\$54,522	\$85,671	\$92,975	\$1,316	-98%	-98%	-99%
12520 Culturally Different; Compensatory	\$21,272	\$117	\$0	\$0	-100%	-100%	N/A
12610 Learning Disability	\$49,240	\$0	\$0	\$0	-100%	N/A	N/A
12710 Equal Opportunity At Risk	\$101,657	\$55,933	\$47,117	\$55,644	-45%	-1%	18%
12810 Special Education Preschool	\$0	\$0	\$111,130	\$28,956	N/A	N/A	-74%
14100 Summer School Programs; Elementary	\$0	\$21,788	\$28,885	\$21,349	N/A	-2%	-26%
14300 Summer School Programs; High School	\$0	\$0	\$1,200	\$1,600	N/A	N/A	33%
16100 Remediation Testing	\$0	\$181,861	\$0	\$0	N/A	-100%	N/A
16200 Preventive Remediation	\$68,248	\$0	\$176,011	\$183,418	169%	N/A	4%
17300 Payments to Other Governmental Units Within State; Area Vocational School (Participating Share)	\$36,198	\$77,382	\$123,740	\$124,961	245%	61%	1%
17400 Payments to Other Governmental Units Within State; Joint Services and Supply; Special Education	\$551,131	\$692,178	\$636,860	\$887,826	61%	28%	39%
17500 Payments to Other Governmental Units Within State; Special Education; Interlocal Agreements	\$87,687	\$63,983	\$0	\$0	-100%	-100%	N/A
17900 Payments to Other Governmental Units Within State; Other	\$18,000	\$0	\$0	\$0	-100%	N/A	N/A
22110 Improvement of Instruction; Service Area Direction	\$0	\$31,400	\$0	\$0	N/A	-100%	N/A
22120 Improvement of Instruction; Instruction and Curriculum Development	\$35,666	\$9,209	\$54,453	\$45,639	28%	396%	-16%
22220 Library/Media Services; School Library	\$129,798	\$218,500	\$197,147	\$184,814	42%	-15%	-6%
22310 Instruction, Related Technology; Technology Service Supervision and Administration	\$40,531	\$121,420	\$99,015	\$73,476	81%	-39%	-26%
22320 Instruction, Related Technology; Student Learning Centers	\$0	\$0	\$0	\$0	N/A	N/A	N/A
22330 Instruction, Related Technology; Systems Analysis and Planning	\$0	\$0	\$21,606	\$57,109	N/A	N/A	164%
22360 Instruction, Related Technology; Network Support	\$48,744	\$44,144	\$62,113	\$84,426	73%	91%	36%
22380 Instruction, Related Technology; Professional Development for Instruction, Focused Technology	\$0	\$0	\$0	\$0	N/A	N/A	N/A
22900 Other Support Service, Instructional Staff	\$0	\$5,998	\$30,532	\$35,230	N/A	487%	15%
25520 Textbooks for Rent or Resale; Textbooks, Workbooks, and Repairs	\$0	\$133,908	\$54,502	\$132,263	N/A	-1%	143%
25560 Textbooks for Rent or Resale; Textbooks and Workbooks	\$204,988	\$0	\$0	\$0	-100%	N/A	N/A
26497 2007 Account Code - Teachers Retirement Fund	\$357,034	\$0	\$0	\$0	N/A	N/A	N/A
<b>Student Academic Achievement Total</b>	<b>\$7,870,201</b>	<b>\$10,518,910</b>	<b>\$10,352,352</b>	<b>\$9,093,219</b>	<b>16%</b>	<b>-14%</b>	<b>-12%</b>
<b>Student Instructional Support</b>							
21110 Attendance and Social Work Services; Service Area Direction	\$0	\$3,902	\$0	\$0	N/A	-100%	N/A
21130 Attendance and Social Work Services; Social Work Services	\$0	\$0	\$36,574	\$26,650	N/A	N/A	-27%
21220 Guidance Services; Counseling Services	\$64,301	\$237,781	\$428,389	\$339,039	427%	43%	-21%
21320 Health Services; Medical Services	\$884	\$489	\$85	\$30	-97%	-94%	-65%
21340 Health Services; Nurse Services	\$40,925	\$69,048	\$87,644	\$77,692	90%	13%	-11%
21390 Health Services; Other Health Services	\$0	\$0	\$200	\$0	N/A	N/A	-100%

**School Corporation Expenditures by Expenditure Type**  
**Biannual Financial Report Data July 2013 - June 2014**  
**Crawford Co Com School Corp (1300)**

<u>Account</u>	<u>FY 2006</u>	<u>FY 2009</u>	<u>FY 2013</u>	<u>FY 2014</u>	<u>Increase from FY 2006</u>	<u>Increase from FY 2009</u>	<u>Increase from previous year</u>
21430 Psychological Counseling	\$0	\$0	\$300	\$0	N/A	N/A	-100%
21990 Other Support Services, Students; Other Student Services	\$2,567	\$3,995	\$28,450	\$9,455	268%	137%	-67%
24100 Office of The Principal	\$688,721	\$1,209,179	\$1,130,272	\$1,053,428	53%	-13%	-7%
24900 Other Support Services, School Administration	\$0	\$6,415	\$95,555	\$91,321	N/A	> 500%	-4%
<b>Student Instructional Support Total</b>	<b>\$797,399</b>	<b>\$1,530,809</b>	<b>\$1,807,468</b>	<b>\$1,597,615</b>	<b>100%</b>	<b>4%</b>	<b>-12%</b>
<b>Overhead and Operational</b>							
23110 Board of Education; Service Area Direction	\$23,655	\$99,960	\$97,938	\$69,274	193%	-31%	-29%
23120 Board of Education; Service Area Assistants	\$145,936	\$227,958	\$235,883	\$261,852	79%	15%	11%
23150 Board of Education; Legal Services	\$9,641	\$3,120	\$6,081	\$9,021	-6%	189%	48%
23160 Board of Education; Promotion Expenses	\$2,370	\$1,683	\$1,654	\$2,884	22%	71%	74%
23210 Executive Administration; Office of The Superintendent	\$112,124	\$168,134	\$161,559	\$177,481	58%	6%	10%
23230 Executive Administration; Staff Relations and Negotiations	\$32,222	\$0	\$0	\$176,000	446%	N/A	N/A
23290 Executive Administration; Other Executive Administration Services	\$41,780	\$0	\$0	\$0	-100%	N/A	N/A
25110 Fiscal Services; Office of The Business Manager	\$0	\$67,044	\$62,314	\$80,646	N/A	20%	29%
25150 Fiscal Services; Payroll Services	\$77	\$0	\$2,404	\$16,654	> 500%	N/A	> 500%
25191 Other Fiscal Services; Refund of Revenue	\$0	\$0	\$4,897	\$0	N/A	N/A	-100%
25193 Other Fiscal Services; Printed Forms	\$1,649	\$0	\$0	\$0	-100%	N/A	N/A
25195 Other Fiscal Services; Bank Account Service Charge	\$55	\$25	\$0	\$83	51%	232%	N/A
25199 Other Fiscal Services; Other	\$0	\$18,000	\$0	\$0	N/A	-100%	N/A
25810 Administrative Technology Services; Technology Services Supervision And Administration	\$0	\$7,650	\$88,738	\$75,583	N/A	> 500%	-15%
25860 Administrative Technology Services; Hardware Maintenance And Support	\$0	\$0	\$0	\$0	N/A	N/A	N/A
25890 Other Technology Services	\$0	\$8,519	\$0	\$0	N/A	-100%	N/A
25990 Other Support Services, Central	\$18,568	\$0	\$0	\$0	-100%	N/A	N/A
26200 Operation and Maintenance of Plant Services; Maintenance of Buildings	\$985,157	\$1,300,770	\$1,252,728	\$1,306,195	33%	0%	4%
26300 Operation and Maintenance of Plant Services; Maintenance of Grounds	\$15,677	\$9,729	\$10,724	\$17,318	10%	78%	61%
26400 Operation and Maintenance of Plant Services; Maintenance of Equipment	\$113,995	\$94,148	\$144,201	\$148,652	30%	58%	3%
26495 2007 Account Code - Support Services, Central ; Other Staff Services ; Official Bonds	\$703	\$0	\$0	\$0	N/A	N/A	N/A
26499 2007 Account Code - Other	\$2,956	\$0	\$0	\$0	N/A	N/A	N/A
26600 Operation and Maintenance of Plant Services; Security Services	\$90	\$0	\$0	\$0	-100%	N/A	N/A
26700 Operation and Maintenance of Plant Services; Insurance	\$102,210	\$136,595	\$95,087	\$175,459	72%	28%	85%
26800 Operation and Maintenance of Plant Services; Other Operation and Maintenance of Plant	\$142	\$0	\$0	\$0	-100%	N/A	N/A
27010 Student Transportation; Service Area Direction	\$5,535	\$110,929	\$8,508	\$19,021	244%	-83%	124%
27100 Student Transportation; Vehicle Operation	\$0	\$0	\$344	\$0	N/A	N/A	-100%
27200 Student Transportation; Monitoring Services	\$34,972	\$51,263	\$78,122	\$78,219	124%	53%	0%
27300 Student Transportation; Vehicle Servicing and Maintenance	\$81,759	\$94,491	\$163,625	\$135,191	65%	43%	-17%
27400 Student Transportation; Purchase of School Buses	\$0	\$78,378	\$59,000	\$110,867	N/A	41%	88%
27500 Student Transportation; Insurance on Buses	\$19,388	\$16,382	\$9,630	\$28,808	49%	76%	199%
27700 Student Transportation; Contracted Transportation Services	\$962,465	\$943,215	\$875,074	\$864,148	-10%	-8%	-1%
27900 Student Transportation; Other Student Transportation Services	\$2,628	\$1,862	\$173,546	\$174,421	> 500%	> 500%	1%
31200 Food Services Operations; Food Preparation and Dispensing	\$597,623	\$833,312	\$978,252	\$918,331	54%	10%	-6%
31900 Other Food Services	\$6,048	\$0	\$0	\$0	-100%	N/A	N/A
<b>Overhead and Operational Total</b>	<b>\$3,319,425</b>	<b>\$4,273,166</b>	<b>\$4,510,310</b>	<b>\$4,846,109</b>	<b>46%</b>	<b>13%</b>	<b>7%</b>
<b>Nonoperational</b>							
33400 Athletic Coaches	\$131,650	\$160,085	\$158,601	\$162,097	23%	1%	2%
33990 Other Community Services; Other	\$15,328	\$23,684	\$5,190	\$3,133	-80%	-87%	-40%
41000 Facilities Acquisition and Construction; Land Acquisition and Development	\$379	\$26,086	\$142	\$0	-100%	-100%	-100%
43000 Facilities Acquisition and Construction; Professional Services	\$95,064	\$9,370	\$1,870	\$3,370	-96%	-64%	80%
45100 Building Acquisition, Construction and Improvement; Building Acquisition, Construction and Im	\$916,289	\$57,420	\$385,269	\$205,739	-78%	258%	-47%
45500 Facilities Acquisition and Construction; Rent of Buildings, Facilities, and Equipment	\$0	\$0	\$119	\$0	N/A	N/A	-100%

**School Corporation Expenditures by Expenditure Type**  
**Biannual Financial Report Data July 2013 - June 2014**  
**Crawford Co Com School Corp (1300)**

<u>Account</u>	<u>FY 2006</u>	<u>FY 2009</u>	<u>FY 2013</u>	<u>FY 2014</u>	<u>Increase from FY 2006</u>	<u>Increase from FY 2009</u>	<u>Increase from previous year</u>
46000 Facilities Acquisition and Construction; Purchase of Moveable Equipment	\$1,707	\$410	\$0	\$0	-100%	-100%	N/A
47000 Facilities Acquisition and Construction; Purchase of Mobile or Fixed Equipment	\$180,563	\$182,708	\$183,725	\$187,930	4%	3%	2%
49000 Facilities Acquisition and Construction; Other Facilities Acquisition and Construction	\$66,303	\$13,330	-\$25,000	\$0	-100%	-100%	N/A
52100 Debt Services; Interest on Debt; Bonds	\$0	\$361,162	\$163,063	\$221,128	N/A	-39%	36%
52200 Debt Services; Interest on Debt; Temporary Loans	\$14,083	\$0	\$0	\$0	-100%	N/A	N/A
53100 Debt Services; Lease Rental; Buildings ; Principal	\$732,075	\$993,354	\$1,007,854	\$1,012,854	38%	2%	0%
53150 Debt Services; Lease Rental; Buildings ; Interest	\$0	\$0	\$0	\$7,775	N/A	N/A	N/A
53300 Debt Services; Lease Rental; School Buses ; Principal	\$1,073	\$0	\$0	\$0	-100%	N/A	N/A
53400 Debt Services; Lease Rental; Other ; Principal	\$0	\$0	\$13,704	\$11,482	N/A	N/A	-16%
54200 Common School Fund; Principal	\$639,330	\$0	\$0	\$0	-100%	N/A	N/A
<b>Nonoperational Total</b>	<b>\$2,793,844</b>	<b>\$1,827,608</b>	<b>\$1,894,536</b>	<b>\$1,815,509</b>	<b>-35%</b>	<b>-1%</b>	<b>-4%</b>
<b>Prorated By Fund</b>							
26491 2007 Account Code - PERF	\$131,139	\$0	\$0	\$0	N/A	N/A	N/A
26492 2007 Account Code - Social Security	\$591,119	\$0	\$0	\$0	N/A	N/A	N/A
26494 2007 Account Code - Group Insurance	\$2,496,445	\$0	\$0	\$0	N/A	N/A	N/A
26496 2007 Account Code - Unemployment Compensation	\$4,475	\$0	\$0	\$0	N/A	N/A	N/A
26498 2007 Account Code - Severance / Early Retirement Pay	\$55,664	\$0	\$0	\$0	N/A	N/A	N/A
<b>Prorated By Fund Total</b>	<b>\$3,278,842</b>	<b>\$0</b>	<b>\$0</b>	<b>\$0</b>	<b>N/A</b>	<b>N/A</b>	<b>N/A</b>