

School Corporation Expenditures by Expenditure Type
Biannual Financial Report Data July 2013 - June 2014
Hammond Academy of Science Tech (9705)

Hammond Academy of Science & Tech (9705)

	FY 2006	FY06 % of Total Exp	FY 2009	FY09 % of Total Exp	FY 2013	FY13 % of Total Exp	FY 2014	FY14 % of Total Exp
Student Academic Achievement	\$0		\$0		\$1,915,352	54.2%	\$1,976,579	44.6%
Student Instructional Support	\$0		\$0		\$483,251	13.7%	\$535,155	12.1%
Overhead and Operational Nonoperational	\$0		\$0		\$630,817	17.9%	\$650,838	14.7%
Grand Total	\$0		\$0		\$3,530,679		\$4,432,665	

Student Instructional Expenditures (Academic Achievement plus Support)

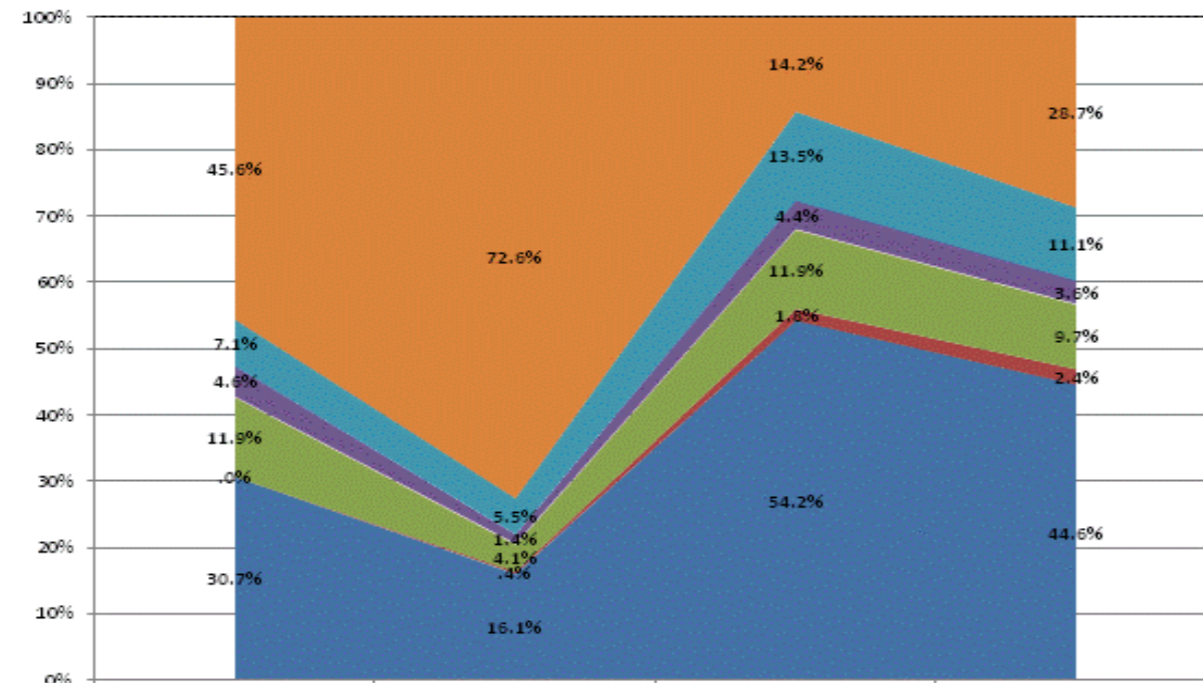
FY 2006

FY 2009

FY 2013
67.9%

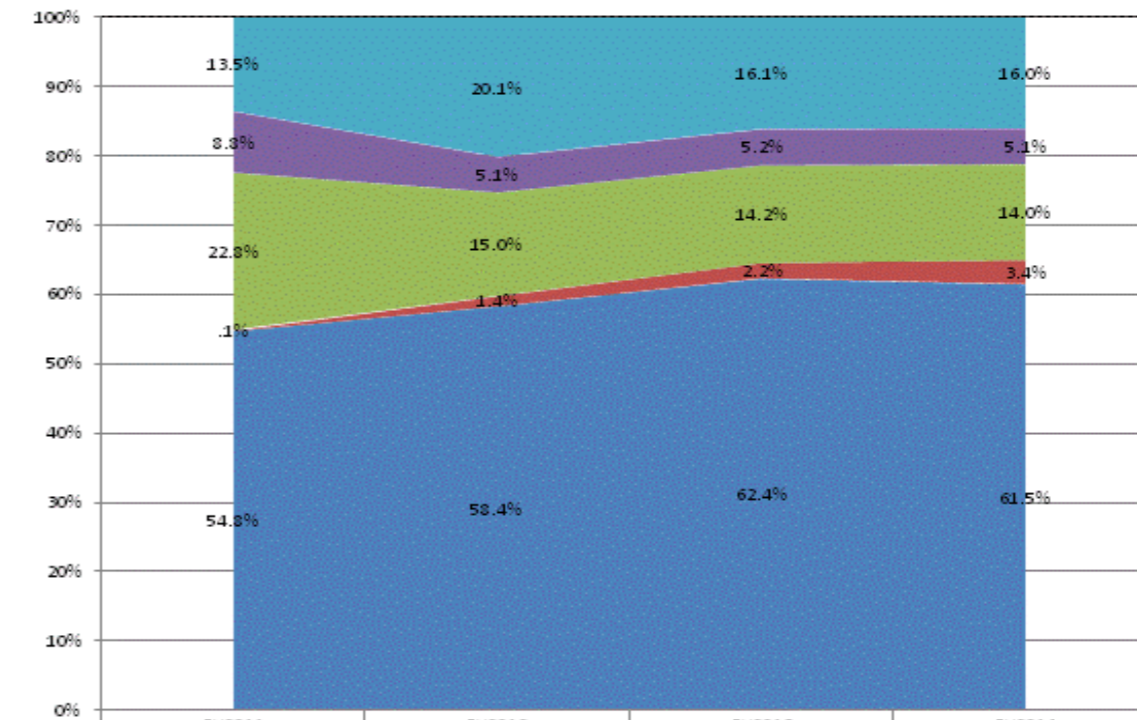
FY 2014
56.7%

All Expenditures



	FY2011	FY2012	FY2013	FY2014
Non-Operational	45.6%	72.6%	14.2%	28.7%
Other Overhead and Operational	7.1%	5.5%	13.5%	11.1%
Corporation Administration	4.6%	1.4%	4.4%	3.6%
School Administration	11.9%	4.1%	11.9%	9.7%
Other Student Instructional Support	.0%	.4%	1.8%	2.4%
Student Academic Achievement	30.7%	16.1%	54.2%	44.6%

Operational Expenditures Only



	FY2011	FY2012	FY2013	FY2014
Other Overhead and Operational	13.5%	20.1%	16.1%	16.0%
Corporation Administration	8.8%	5.1%	5.2%	5.1%
School Administration	22.8%	15.0%	14.2%	14.0%
Other Student Instructional Support	.1%	1.4%	2.2%	3.4%
Student Academic Achievement	54.8%	58.4%	62.4%	61.5%

School Corporation Expenditures by Expenditure Type
Biannual Financial Report Data July 2013 - June 2014
Hammond Academy of Science Tech (9705)

<u>Account</u>	<u>FY 2006</u>	<u>FY 2009</u>	<u>FY 2013</u>	<u>FY 2014</u>	<u>Increase from FY 2006</u>	<u>Increase from FY 2009</u>	<u>Increase from previous year</u>
Student Academic Achievement							
11200 Regular Programs; Middle/Junior High	\$0	\$0	\$945,354	\$877,154	N/A	N/A	-7%
11300 Regular Programs; High School	\$0	\$0	\$652,398	\$852,145	N/A	N/A	31%
12610 Learning Disability	\$0	\$0	\$126,757	\$127,955	N/A	N/A	1%
22130 Improvement of Instruction; Instructional Staff Training	\$0	\$0	\$24,014	\$16,770	N/A	N/A	-30%
22360 Instruction, Related Technology; Network Support	\$0	\$0	\$166,830	\$102,555	N/A	N/A	-39%
Student Academic Achievement Total	\$0	\$0	\$1,915,352	\$1,976,579	N/A	N/A	3%
Student Instructional Support							
21220 Guidance Services; Counseling Services	\$0	\$0	\$63,410	\$104,685	N/A	N/A	65%
21340 Health Services; Nurse Services	\$0	\$0	\$368	\$269	N/A	N/A	-27%
24100 Office of The Principal	\$0	\$0	\$419,472	\$430,201	N/A	N/A	3%
Student Instructional Support Total	\$0	\$0	\$483,251	\$535,155	N/A	N/A	11%
Overhead and Operational							
23110 Board of Education; Service Area Direction	\$0	\$0	\$0	\$0	N/A	N/A	N/A
23150 Board of Education; Legal Services	\$0	\$0	\$9,052	\$7,875	N/A	N/A	-13%
23210 Executive Administration; Office of The Superintendent	\$0	\$0	\$79,135	\$82,606	N/A	N/A	4%
23220 Executive Administration; Community Relations	\$0	\$0	\$0	\$0	N/A	N/A	N/A
25150 Fiscal Services; Payroll Services	\$0	\$0	\$9,883	\$12,448	N/A	N/A	26%
25160 Fiscal Services; Financial Accounting	\$0	\$0	\$55,963	\$52,734	N/A	N/A	-6%
25191 Other Fiscal Services; Refund of Revenue	\$0	\$0	\$582	\$0	N/A	N/A	-100%
25195 Other Fiscal Services; Bank Account Service Charge	\$0	\$0	\$75	\$2,142	N/A	N/A	> 500%
25720 Personnel Services; Recruitment and Placement	\$0	\$0	\$0	\$843	N/A	N/A	N/A
26200 Operation and Maintenance of Plant Services; Maintenance of Buildings	\$0	\$0	\$285,293	\$279,840	N/A	N/A	-2%
26300 Operation and Maintenance of Plant Services; Maintenance of Grounds	\$0	\$0	\$2,110	\$6,954	N/A	N/A	230%
26400 Operation and Maintenance of Plant Services; Maintenance of Equipment	\$0	\$0	\$12,200	\$6,105	N/A	N/A	-50%
26600 Operation and Maintenance of Plant Services; Security Services	\$0	\$0	\$5,480	\$8,337	N/A	N/A	52%
26700 Operation and Maintenance of Plant Services; Insurance	\$0	\$0	\$51,776	\$63,249	N/A	N/A	22%
27700 Student Transportation; Contracted Transportation Services	\$0	\$0	\$4,844	\$4,066	N/A	N/A	-16%
31200 Food Services Operations; Food Preparation and Dispensing	\$0	\$0	\$0	\$19,028	N/A	N/A	N/A
31400 Food Services Operations; Food Purchases	\$0	\$0	\$114,295	\$104,380	N/A	N/A	-9%
31900 Other Food Services	\$0	\$0	\$130	\$233	N/A	N/A	80%
Overhead and Operational Total	\$0	\$0	\$630,817	\$650,838	N/A	N/A	3%
Nonoperational							
33990 Other Community Services; Other	\$0	\$0	\$2,353	\$23,206	N/A	N/A	> 500%
41000 Facilities Acquisition and Construction; Land Acquisition and Development	\$0	\$0	\$0	\$0	N/A	N/A	N/A
45100 Building Acquisition, Construction and Improvement; Building Acquisition, Construction and Im	\$0	\$0	\$28,910	\$132,150	N/A	N/A	357%
45500 Facilities Acquisition and Construction; Rent of Buildings, Facilities, and Equipment	\$0	\$0	\$11,214	\$10,927	N/A	N/A	-3%
46000 Facilities Acquisition and Construction; Purchase of Moveable Equipment	\$0	\$0	\$458,782	\$96,422	N/A	N/A	-79%
51100 Debt Services; Principal on Debt; Bonds	\$0	\$0	\$0	\$1,007,375	N/A	N/A	N/A
52200 Debt Services; Interest on Debt; Temporary Loans	\$0	\$0	\$0	\$13	N/A	N/A	N/A
Nonoperational Total	\$0	\$0	\$501,258	\$1,270,092	N/A	N/A	153%