

# Absentee Ballots

Valerie Warycha Co-General Counsel

**Absentee  
Applications**

**Managing  
Absentee  
Ballots**

**In-Person**

**By Mail**

**Travel  
Board**

## Absentee Applications

**Direct  
Mail  
Disclaimer**

Primary  
By Mail  
11:59 p.m. April 23

Travel Board  
Noon May 4

General  
By Mail  
11:59 Oct. 22

Travel Board  
Noon Nov. 2

**Submission  
of  
Application**

## **Submitting Applications**

Directly to county election board or  
Indiana Election Division

Third parties must submit the  
application within 10 days or by the  
deadline, whichever is sooner (ABS -17)

ABS boards can be on the ballot, but  
must be segregated from managing  
ballots in precinct where their name  
appears

## **Direct Mail Disclaimer**

**(for absentee mail)**

More than 100 pieces of mail,  
must include a disclaimer.

Name

Address

12 point font

Color contrast

# Absentee Ballots

Valerie Warycha Co-General Counsel

**Absentee  
Applications**

**Managing  
Absentee  
Ballots**

**In-Person**

**By Mail**

**Travel  
Board**

# Managing Absentee Ballots

## ABS Voter Boards

- Two people appointed by D and R chair
- Can't be on the ballot or related to a candidate

## Deadline

- CEB must notify chairs 50 days before election
  - March 16 and September 14
- Chairs must provide names 46 days before the election.
  - By noon March 20 and September 18

Replacement  
Ballot

Storing

Ballot  
Initialing

Review

Disagreement

Denial



**Applications must be reviewed  
by the ABS Board or County  
Election Board**

- Applicant must be registered to vote in the precinct
- Information on application appears true
- Signature on application substantially conforms
  - Two signature reviews

# Disagreement

By Mail - Application goes to county election board  
In-Person - Vote a provisional ballot





# Denial

- No notice requirement for domestic voters
- Military and overseas voters must send notice within 48 hours (ABS -14)



## Ballot Initialing

- Optical scan or paper ballots - bi-partisan set of initials always required.
- DRE - No clerk's seal, signature or initialing is required to be on the ballot screen

## **Storing Absentee Ballots**

- Place all accepted ballots in a large envelope
- Organize by precinct
- Store in a container with bi-partisan locks
- Store with ABS app attached

## Replacement Ballot

### Yes

- Doesn't arrive in a reasonable time
- Lost
- Damaged
- Defective

### No

- Wants to change party

# Absentee Ballots

Valerie Warycha Co-General Counsel

**Absentee  
Applications**

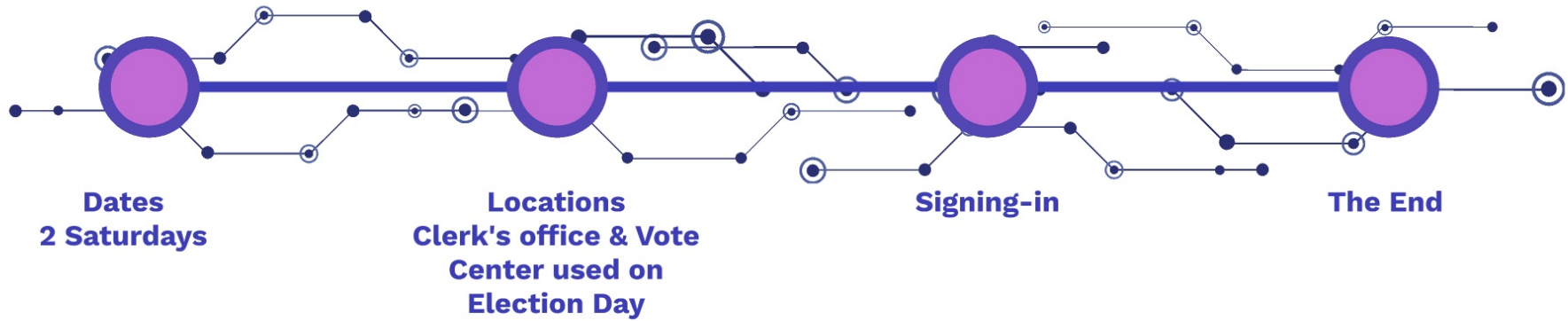
**Managing  
Absentee  
Ballots**

**In-Person**

**By Mail**

**Travel  
Board**

# In-Person Absentee Voting



# Absentee Ballots

Valerie Warycha Co-General Counsel

**Absentee  
Applications**

**Managing  
Absentee  
Ballots**

**In-Person**

**By Mail**

**Travel  
Board**

# By Mail

**USPS**

**Deadlines**

**ABS-8  
&  
ABS-6**

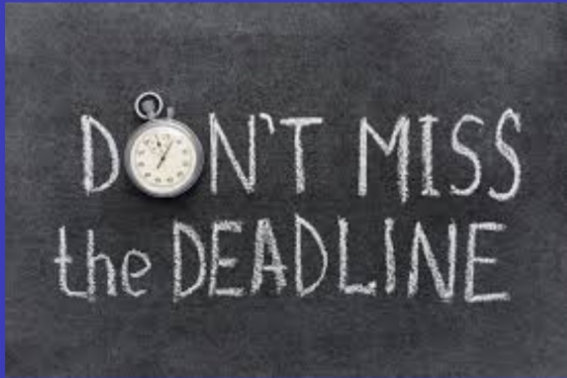


# Preparing Absentee Ballot Mailings



**Work with your USPS Mail Analyst  
Include ABS Voter Bill of Rights and  
MOVE info sheet**

# Deadlines for Mailing Absentee Ballots



**Absolute deadline 45 days before the election  
or  
not later than 5 days after receiving ABS Ballots**

# Mail ballots using ABS-8 and include an ABS-6 return envelope



**Voter must seal and sign envelope**

# Absentee Ballots

Valerie Warycha Co-General Counsel

**Absentee  
Applications**

**Managing  
Absentee  
Ballots**

**In-Person**

**By Mail**

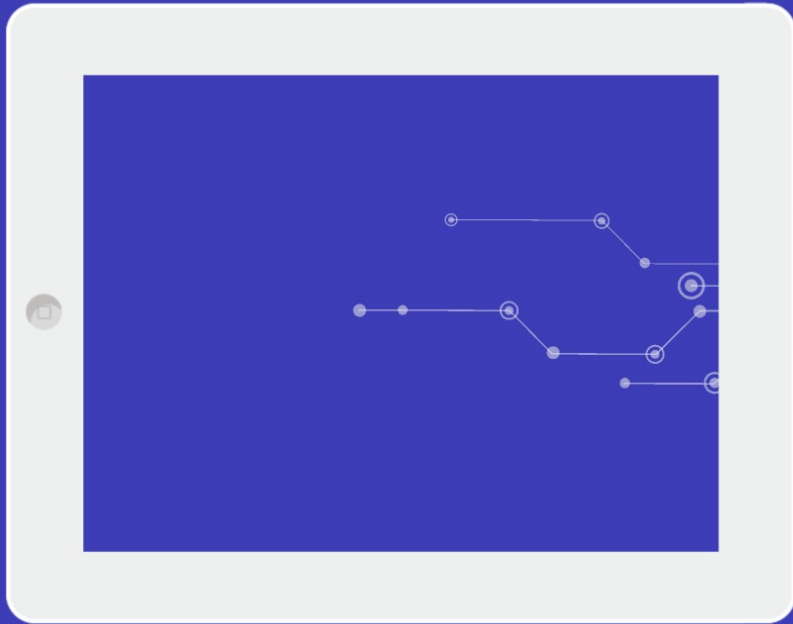
**Travel  
Board**

# **Travel Board**

**Who is  
Eligible**

**Dates**

# Who is Eligible

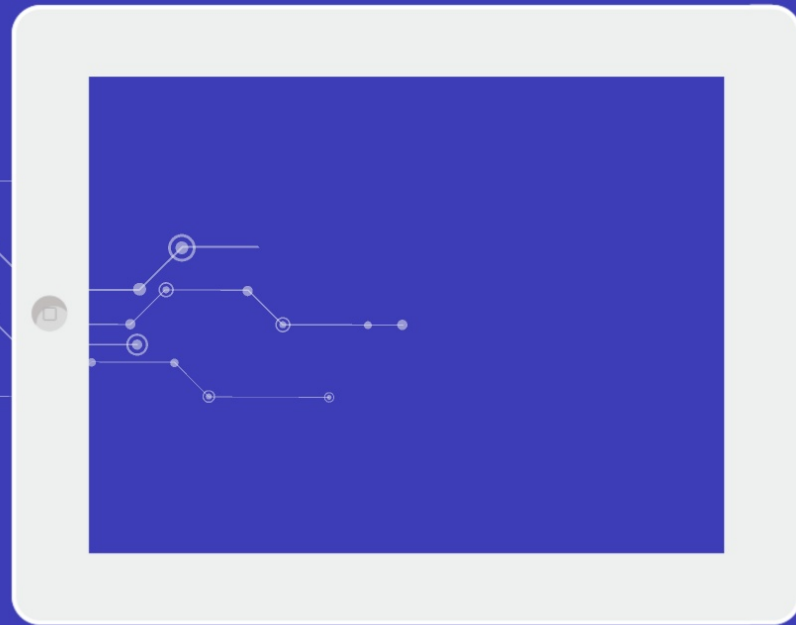


- Ill or injured voters
- Caretakers
- Voters with a disability
- Voters who can't mark their own ballot

# Travel Board Dates

Primary  
April 16-May 4

General  
October 15 - November 2



# Absentee Ballots

Valerie Warycha Co-General Counsel

**Absentee  
Applications**

**Managing  
Absentee  
Ballots**

**In-Person**

**By Mail**

**Travel  
Board**